

## Needful Things #SP18

- \* Approx. 11" X 6" W Double Layer Muslin
- \* Approx. 14" X 4" W. Folded Layer Fabric for Dress
- \* 2 Pieces 7" X 5" W. Fabric for Seed Bag
- \* Scrap Piece Osnaburg for Date
- \* Scrap Piece of Burlap for Nose
- \* Fiberfill or Polyfill
- \* Doll Needle
- \* Sponge Brush
- \* Basic Sewing Supplies
- \* Button / Coat or any Heavy Thread, White & Coordinating Color of Dress Fabric
- \* Pencil or Disappearing Marker
- \* Fine Sand Paper
- \* Instant Coffee, Vanilla
- \* Cotton String for Drawstring, Hanger and Stitching
- \* Embroidery Floss for Date
- \* Hemostat for Stuffing

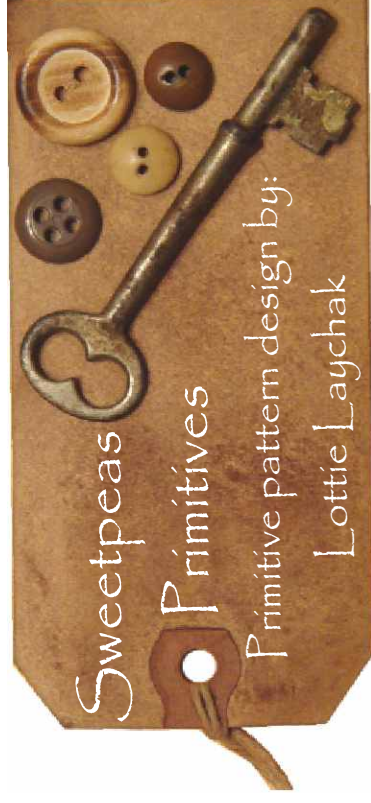
© Copyright Sweetpeas Primitives 2005

Lottie Laychak  
14515 McKinley  
Posen, IL 60469  
708-388-1105

E-mail: [sweetpeasprimitives@comcast.net](mailto:sweetpeasprimitives@comcast.net)

Ebay ID: [sweetpea301](https://www.ebay.com/str/sweetpea301)

[www.sweetpeasprimitives.com](http://www.sweetpeasprimitives.com)



Primitive Seed Bag Doll #SP18

2005

Sweetpeas Primitives  
Primitive Seed Bag Doll #SP18

Please read all instructions and pattern pieces before you begin. Some instructions will also appear on the pattern pieces to help make it simpler. Detailed instructions are included, but you can be creative and add your own special touch! I hope you have as much fun as I did creating this little sweetie!

**Pattern:** This Primitive Seed Bag Doll is made from grungy muslin that is coffee and vanilla stained. This pattern and supplies listed is for making one seed bag doll. She is so simple and primitive you will just love the way she looks. Her seed bag and dress were made from reproduction Civil War fabrics, but you can use any fabric of your choice. The seed bag has a draw string and the year "1873" embroidered on a piece of stained osnaburg that is hand stitched on. You can trace your pattern onto white tissue paper as your template or trace the pattern onto a piece of mylar or manilla folders using tracing paper. By doing this your original pattern will stay intact and you will have a nice sturdy template.

\_\_\_\_\_ Cutting line  
RST - Right Sides Together

----- Sewing line  
RSO - Right Side Out

**Doll:** With fabric RST, trace the dolls body pattern piece on 11" long X 6" wide piece of double layer of muslin with a light pencil or a disappearing marker. Cut out the body then cut a slit in the back piece of the back for stuffing where indicated on pattern. The slit will be covered by the dress. Sew the body pieces together and before turning RSO clip all corners and trim excess material as indicated on pattern. Be careful not to cut your stitch! (Been there, done that! LOL) Turn body RSO and stuff with fiberfill using your hemostat. With white thread, whip stitch the back opening closed and tie off securely. Take a piece of cotton string and tie a loop for the hanger. Sew the loop with white heavy thread just below the dolls neck line for the hanger. Cut out the nose from a scrap piece of burlap and with white heavy thread, sew the nose on to the dolls face. Make sure you enter your needle just below the neck line so your knot will be covered by the dress.

**Dolls Dress:** With fabric of your choice RST, trace two of the dolls dress pattern pieces on a folded layer of fabric with a light pencil or a disappearing marker. Cut out the pieces and sew the pieces together, leaving open as indicated on the pattern. Before turning RSO clip all corners as indicated on pattern. Be careful not to cut your stitch! Set aside for staining.

**Seed Bag:** Cut out two pieces of 7" L X 5" W for your seed bag. With RST sew down the one side as indicated on the pattern. Next, sew a small hem on the other two sides as indicated on the pattern. Place your piece of cotton string near the top and fold top fabric over. Sew the fabric being careful not to sew the string. Then with RST, sew the bottom and then the side up to the string. Turn RSO. Next, cut out your piece of osnaburg and with 3 strands of embroidery floss, stitch the date on the piece. When finished, hand stitch the piece on to your seed bag and set aside for staining.

Now for the fun stuff!!

**●Aging Technique:**

- (1) Cup warm water enough to dissolve the instant coffee
- (6) Tablespoons of instant coffee (experiment to get the darkness you prefer)
- (3) Tablespoons vanilla (can use more if you like)

Mix all the ingredients. I like to put on the plastic gloves when doing this so your hands do not stain. Sponge brush the mixture onto the body and soak all other pieces in the staining mixture. Squeeze out excess mixture lay flat on a foiled lined cookie sheet. Let dry overnight or if you would like to speed up the drying process you can place the items in a 200 degree oven for 10-15 minutes or until dry on a foiled lined cookie sheet. **WATCH CAREFULLY SO THE PIECES DO NOT BURN!!!** Check often!!! Times will vary with different ovens. Remove all pieces when dry. Lightly sand the doll and seed bag with fine sand paper. Be careful not to put holes in them.

**Finishing:** Dressing the doll. Place the dolls dress over the dolls head, placing arms through the sleeves (you may have to bend them to pull through sleeves. Fold neck line over on the dress and place a few stitches with coordinating thread to match the dress in the neck line to fit.

Next, place the doll in the seed bag up to her arm pits and pull taunt on the draw string (be careful not to pull too tight so you do not break the string) and tie a bow in it . Your little seed bag doll is finished.

Hope you had as much fun making her as I did creating her! She is so sweet and is sure to warm your heart. Prim Blessings!

**Disclaimer:** You may make and sell the finished doll at your craft shows, website or on Ebay. Out of courtesy, please mention that it is a Sweetpeas Primitives pattern. Mass production and or selling the finished product in a magazine, catalog or other media is prohibited. Copying, enlarging, reducing or reselling my pattern is also prohibited. This is a copyright pattern. No refunds or exchanges. Sweetpea's Primitives is not responsible for human and or printing error or individual workmanship.

Feel free to email me with any questions that you have at:  
sweetpeasprimitives@comcast.net

© Copyright Sweetpea's Primitives 2005

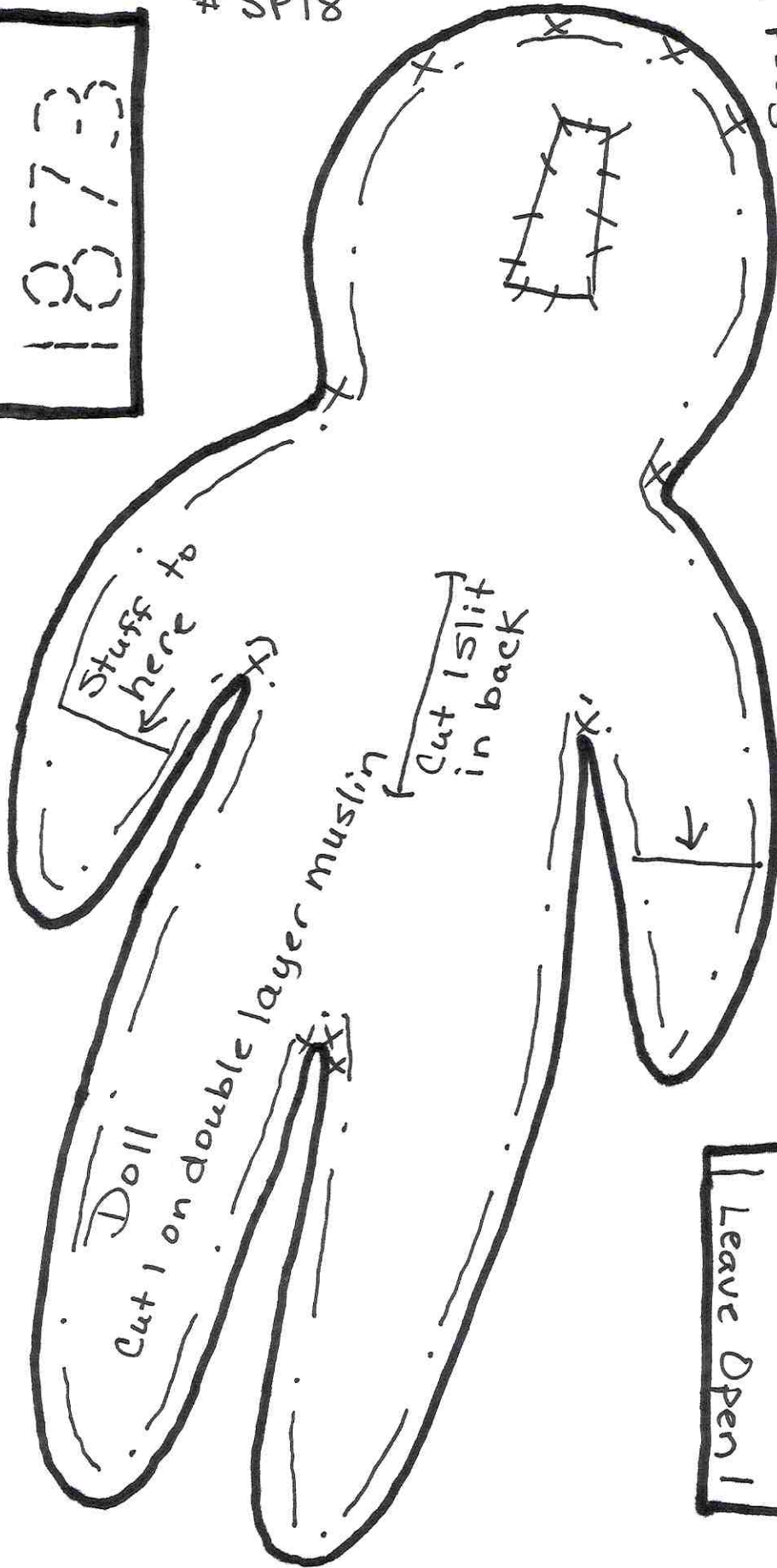
Lottie Laychak  
Primitive Folk Art Artist  
14515 McKinley  
Posen, IL. 60469

Ebay ID: sweetpea301

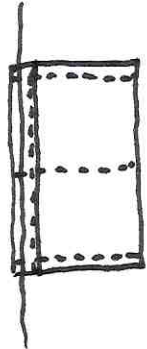
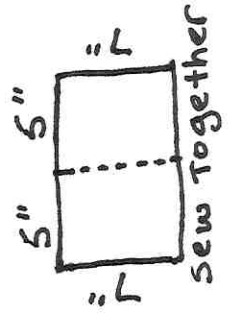
I will be listing more of my patterns on Ebay in the future  
To view my complete primitive pattern line, please visit [www.sweetpeasprimitives.com](http://www.sweetpeasprimitives.com)

© Sweet peas Primitives 2005  
 Seed Bag Doll  
 # SP18

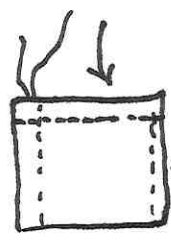
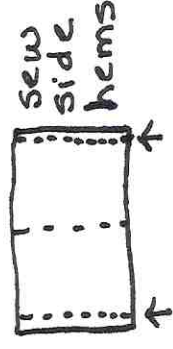
1873



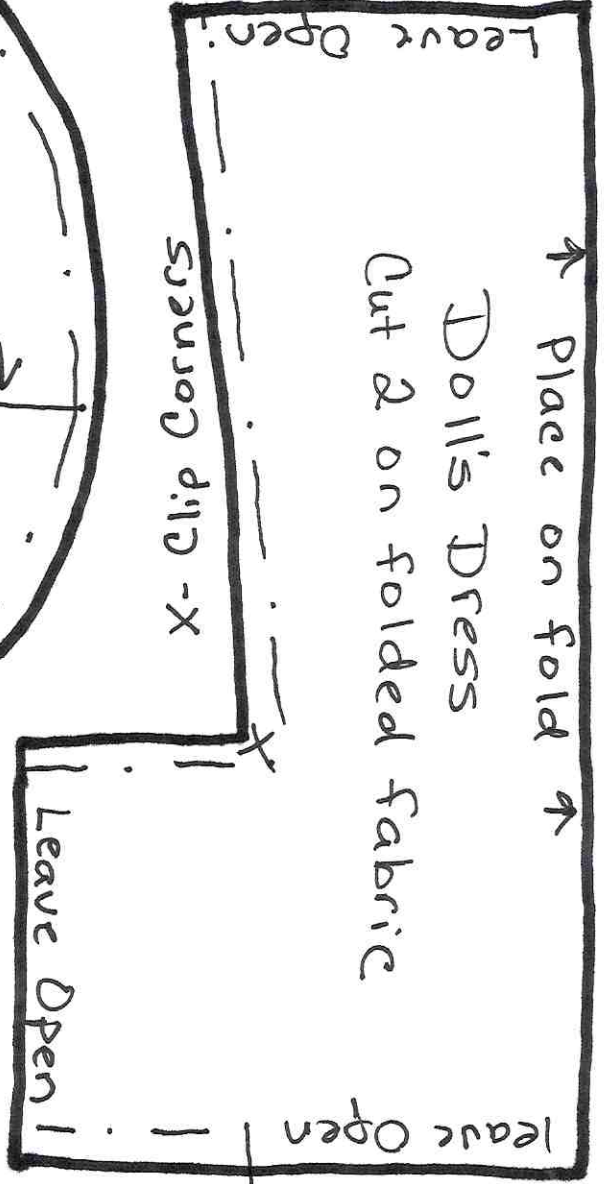
Seed Bag



lay cotton string  
 at top & fold  
 over top edge &  
 sew hem



Fold RST  
 & sew bottom  
 and side seam



X-clip Corners

Doll's Dress  
 Cut 2 on folded fabric

Place on fold

Leave Open

Leave Open

Leave Open

