

Needful Things

- * 2 Pieces each 17" L X 3 1/2" W Star Material & Stripe Material
- * 7" L X 7" W Unbleached Muslin
- * Scrap Piece of Material for Nose
Fiberfill or Polyfill
- * Embroidery Floss, Barn Red (DMC #221)
- * Embroidery Needle
- * Sponge Brush
- * Basic Sewing Supplies
- * Button/Coat or any Heavy Thread, Black & White
- * Pencil or Disappearing Marker
- * Fine Sand Paper
- * Instant Coffee, Vanilla
- * Rusty Tin Star & Wire
Jute
- * Wool Hair, Burgundy or Red
- * Hemostat for Stuffing
- * Vintage Leather Buttons
- * Small Safety Pin
- * Two Vintage Skeleton Keys or Other Embellishments

© Copyright Sweetpeas Primitives 2004

Lottie Laychak

14515 McKinley

Posen, IL 60469

708-388-1105

E-mail: sweetpeasprimitives@comcast.net

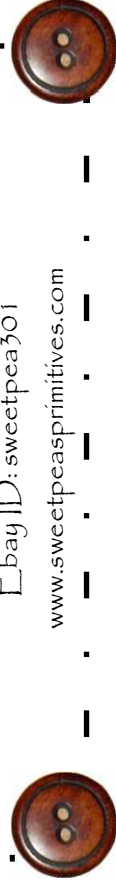
Ebay ID: [sweetpea301](https://www.ebay.com/str/sweetpea301)

www.sweetpeasprimitives.com



Extreme Prim USA Annie Angel!

#SP12 2004





Sweetpeas Primitives
Extreme Primitive USA Annie Angel #SP12

Please read all instructions and pattern pieces before you begin. Some instructions will also appear on the pattern pieces to help make it simpler. Detailed instructions are included, but you can be creative and add your own special touch! I hope you have as much fun as I did creating this little sweetie!

Pattern: This Extreme USA Annie Angel are made from grungy muslin that is coffee and vanilla stained, baked, painted and sanded. She has a pinch stitched mouth, wool hair, vintage button eyes and a stitched on fabric nose. Her wings are made from two separate materials (stars and stripes) that are sewn together for a flag like look. I embellished her wings with two vintage skeleton keys, but you can either do the same or use your imagination and embellish with whatever you choose. If you would like to make this Annie Angel for different seasons you can change the material for her wings and either use an old quilt for wings, painted muslin or any other holiday fabric. You can trace your pattern onto white tissue paper as your template or trace the pattern onto a piece of mylar or manilla folders using tracing paper. By doing this your original pattern will stay intact and you will have a nice sturdy template.

_____ Cutting line
RST - Right Sides Together

----- Sewing line
RSO - Right Side Out

Annies Head: With fabric RST, trace the head pattern piece on 7" X 7" piece of double layer of muslin with a light pencil or a disappearing marker. Cut out the head pieces then cut a slit in the back piece of the head for stuffing where indicated on pattern making sure the slit will be covered by the wings. Sew the head pieces together and before turning RSO clip all corners and trim excess material. Be careful not to cut your stitch! Turn head RSO and stuff the head with fiberfill using your hemostat. With white thread, whip stitch the back opening closed and tie off securely.

Annies Wings: You will need to make **two** of these. Take you star material and your stripe material and with **RST**, sew the two pieces together with a 1/4" seam. When you have both of your stars and striped pieces sewn together, fold each piece in half making sure the fabric lines up with each other. Place the wing pattern on the fold, trace pattern and cut out the wing. Repeat this step for the other piece. Cut a slit in the front piece of the material for stuffing. With RST sew the wing pieces together. Turn RSO and lightly stuff with fiberfill you will want then a little soft and not stuffed firm. With white thread, whip stitch the opening closed.

Nose: Cut out the scrap piece of fabric for her nose. I used the same striped material as her wing material, you can used any scrap piece you want. Refer to the pattern for placement and nose size. Enter at the back of the head (make sure the wings will cover your knot) with the white thread (or any color you choose to stitch on the nose) and stitch on the nose fabric piece. Exit where you entered and knot of securely.

Now for the fun stuff!!

Aging Technique:

- * (1) Cup warm water enough to dissolve the instant coffee
- (4) Tablespoons of instant coffee (experiment to get the darkness you prefer)
- (3) Tablespoons vanilla (can use more if you like)

Mix all the ingredients. I like to put on the plastic gloves when doing this so your hands do not stain. Sponge brush the mixture onto the head and wings. Let dry overnight or if you would like to speed up the drying process you can place the items in a 220-225 degree oven for 10-15 minutes or until dry on a foiled lined cookie sheet. WATCH CAREFULLY SO THE PIECES DO NOT BURN!!! Check often.

Finishing: Sew her wool hair to the hair line of her head as indicated on the pattern. You can use your judgement and use as much as you like or go according to the picture. Lightly sand her face and wings. If you would like you can lightly draw on the facial feature with a light pencil. Attach one of Annies eyes with a small safety pin. With black heavy thread enter from the back of the head making sure the wings will cover the knot and sew on Annies other eye. Without exiting sew on Annies eye lashes as indicated on the pattern. Exit where you entered and tie off securely. Next with the barn red embroidery thread, entering from the back, sew on Annies mouth as indicated on the pattern. Take a piece of rusty tin wire and attach it to your rusty tin star. You can drill a hole in the star and attached the wire that way. Sew the rusty tin wire to the back of Annies head. Next sew Annies head to the wings and embellish the wings with whatever you choose to use. Finally, sew a piece of jute on the middle back of the wings so she can hang.

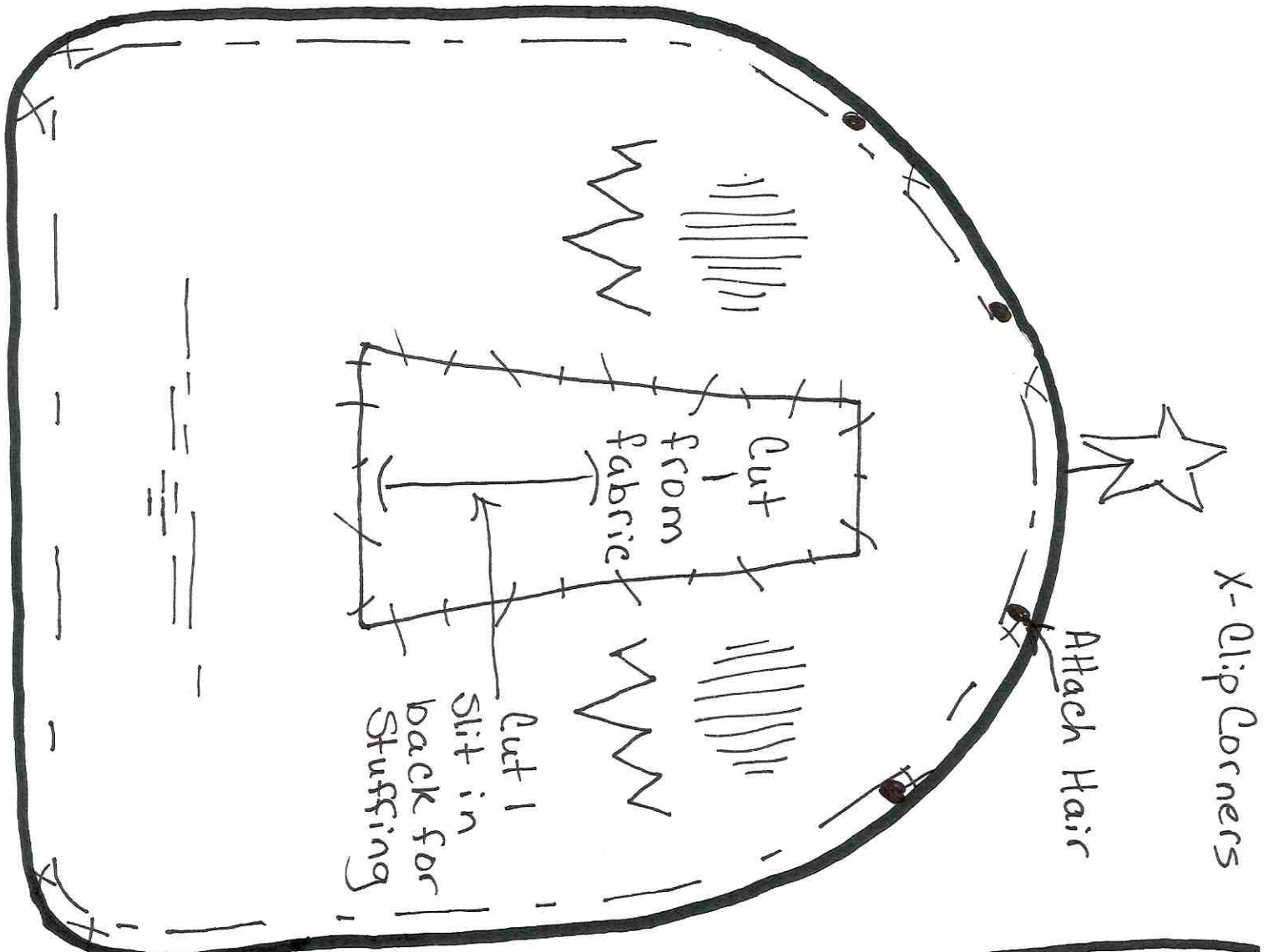
Hope you had as much fun making her as I did creating her! She is so sweet and is sure to warm your heart. Prim Blessings!

Disclaimer: You may make and sell the finished doll at your craft shows, website or on Ebay. Out of courtesy, please mention that it is a Sweetpeas Primitives pattern. Mass production and or selling the finished product in a magazine, catalog or other media is prohibited. Copying, enlarging, reducing or reselling my pattern is also prohibited. This is a copyright pattern. No refunds or exchanges.

Feel free to email me with any questions that you have at:
sweetpeasprimitives@comcast.net

© Copyright Sweetpeas Primitives 2004
Lottie Laychak
14515 McKinley
Posen, IL. 60469

I will be listing more of my patterns on Ebay, if you would like to take a peek, ID: sweetpea301
www.sweetpeasprimitives.com



X-Clip Corners

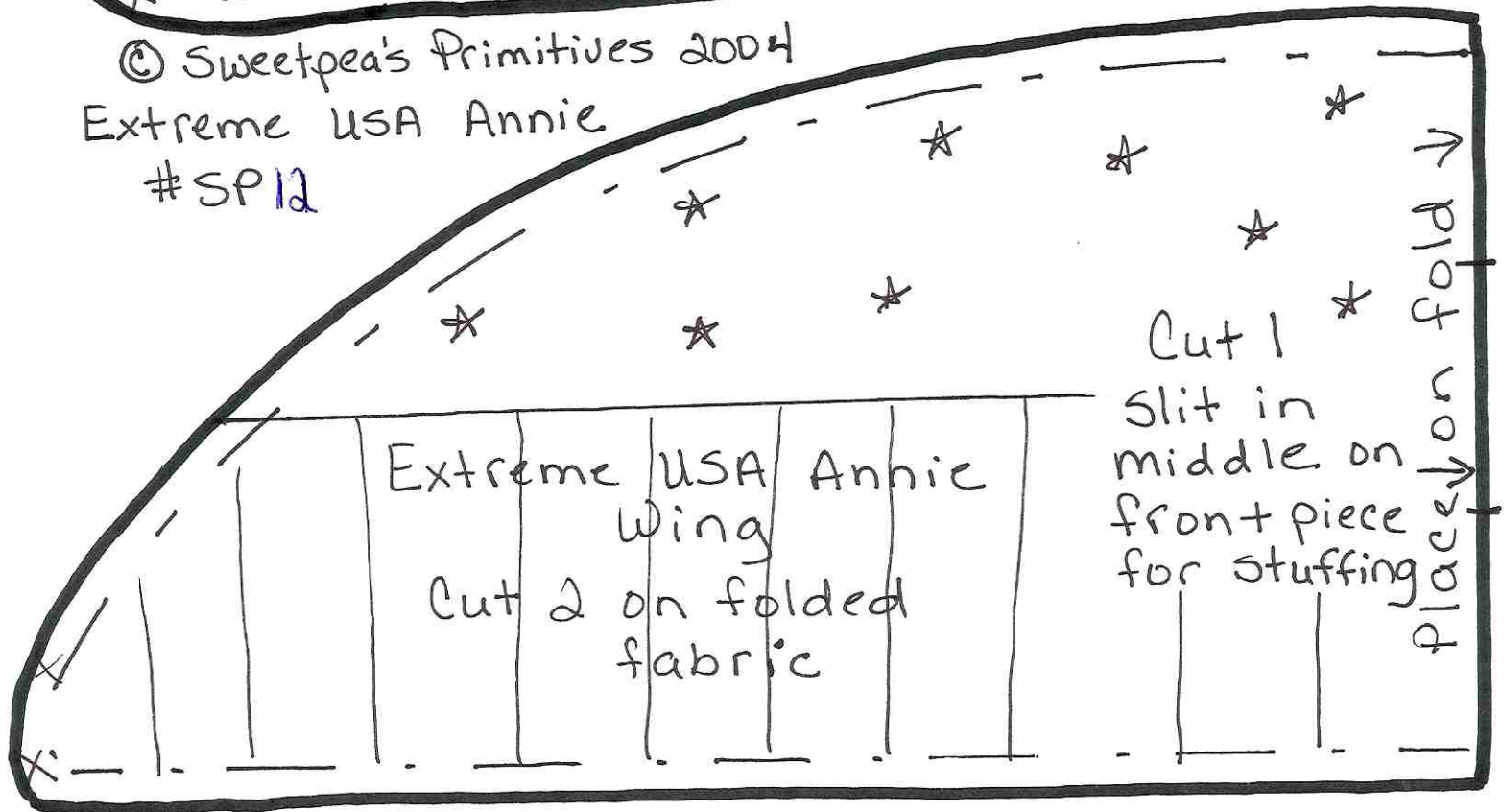
Attach Hair

Cut from fabric

Cut 1

Slit in back for stuffing

© Sweetpea's Primitives 2004
 Extreme USA Annie
 #SP12



place on plot

Cut 1
 Slit in middle on front piece for stuffing

Extreme USA Annie
 Wing
 Cut 2 on folded fabric