

## Things You'll Be A Needin'

- 1/4 Yard Quilted Muslin
- 1/2 Yard Muslin
- Fiberfill Stuffing
- Sand or Polypellets
- Acrylic Paint-Black, Dark Forest Green,
- Antique Gold, Candy Bar Brown
- Black DMC Floss
- Jute
- Thin Wire
- Fine Sandpaper
- White School Glue
- Coffee Stain Mix and Cinnamon
- Disappearing Marker
- Grubby Tag
- Long Stick Outa the Yard

### Threadbare Primitives

P.O. Box 1588  
Anahuac, TX 77514  
409-267-6679  
[www.threadbareprimitives.com](http://www.threadbareprimitives.com)  
[tbpsales@gmail.com](mailto:tbpsales@gmail.com)

© 2005 Susan Dean Threadbare Primitives  
All Rights Reserved  
Please feel free to make this pattern for fun or profit.  
You may sell the finished product on ebay, your website  
or any other auction site, as long as you give me credit  
as the designer. Mass producing or photocopying of this  
pattern is strictly prohibited.

## Threadbare Primitives

Primitive Doll and Folk Art Patterns



#127 Pineapple with Three Stacking  
Crows

**\*\*BEFORE YOU BEGIN\*\***

\* Read all instructions thoroughly and assemble all the materials you will need before beginning.

\* 1/4" seam allowance is not included on most pattern pieces. Tracing line is sewing line unless otherwise indicated. Refer to pattern.

\* You may coffee stain your fabric before beginning your project or after. (or both!)

**\*\*TECHNIQUES FOR PRIMIN' IT\*\***

**Coffee Stain Mix**

\* Mix approx. 1/4 cup instant coffee with 1/2 cup water plus a pinch of vanilla extract. You may even add a hint of cinnamon to the mixture. For a lighter stain effect use instant tea. You may apply this with a sponge brush or squirt bottle.

**Bakin' Your Prims**

\* Some people like to bake their projects in the oven to "age" them a bit. If you choose to do this after coffee staining PLEASE WATCH IT CLOSELY! Slow dry your project in a warm 180 degree oven with the door left ajar just slightly. Turn your prim every so often to prevent scorching and allow it to dry evenly.

**Sanding**

\* The key to the prim look is careful sanding of your project. I use fine sandpaper. Medium is ok, just be careful, you don't want to sand straight through the fabric. Sand lightly all over. A little more in areas that would naturally show more age. Afterwards, you may rub lightly with cinnamon to "grubby" it up even more. Makes it smell good too!

**Makin' a Prim Tag**

\* Spray or brush coffee mix on tags, bake in oven at 180 degrees until dry. After they cool add your favorite prim saying.

### \*Lets Get Started

Place pineapple pattern on doubled quilted muslin and cut out. Sew with 1/4" seams. Sew around three sides as indicated on pattern. Leave open at top. Trim excess. Before you turn your pineapple right side out we need to "box" the bottom so it will sit nicely. To make a box seam, lay the pineapple down in front of you. Take the side seam on the right side and match it to the bottom seam. You will have formed a triangle. Sew across that triangle 1" in from the point all the way across. Tie off the ends to secure and do the same thing on the left side. Cut off both points to about 1/4" from your seam. Turn right side out.

Now we need to weight the bottom so it doesn't tip over. You may use poly pellets or sand. Fill a little plastic sandwich bag with either one and place in the bottom of your pineapple. Stuff the rest to approx 1" from the top with fiberfill. Stain your pineapple with the coffee mixture. Let dry. Paint the entire pineapple in antique gold. Let dry. Sand lightly all over with fine sand paper then once again spray with your coffee mixture. While the pineapple is still wet, rub it down good with cinnamon. Allow to air dry.

### Makin' the Leaves

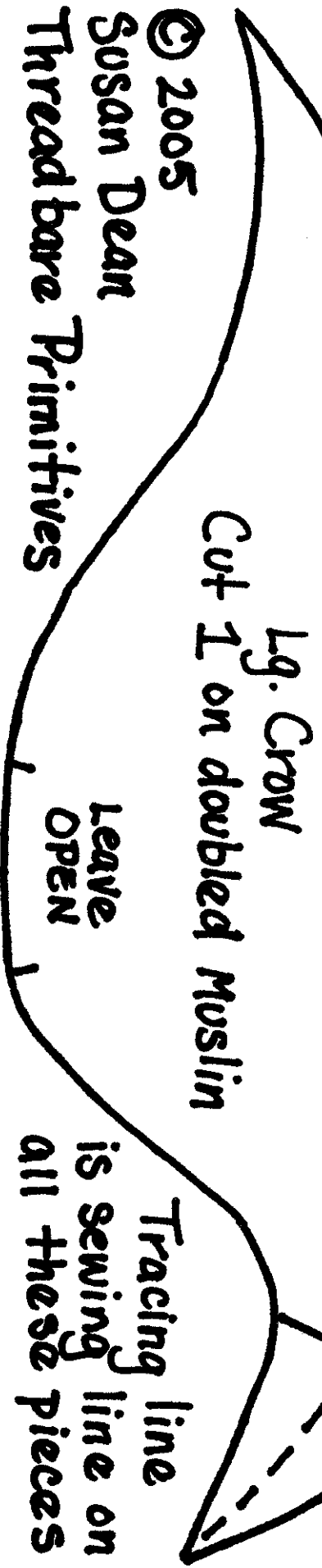
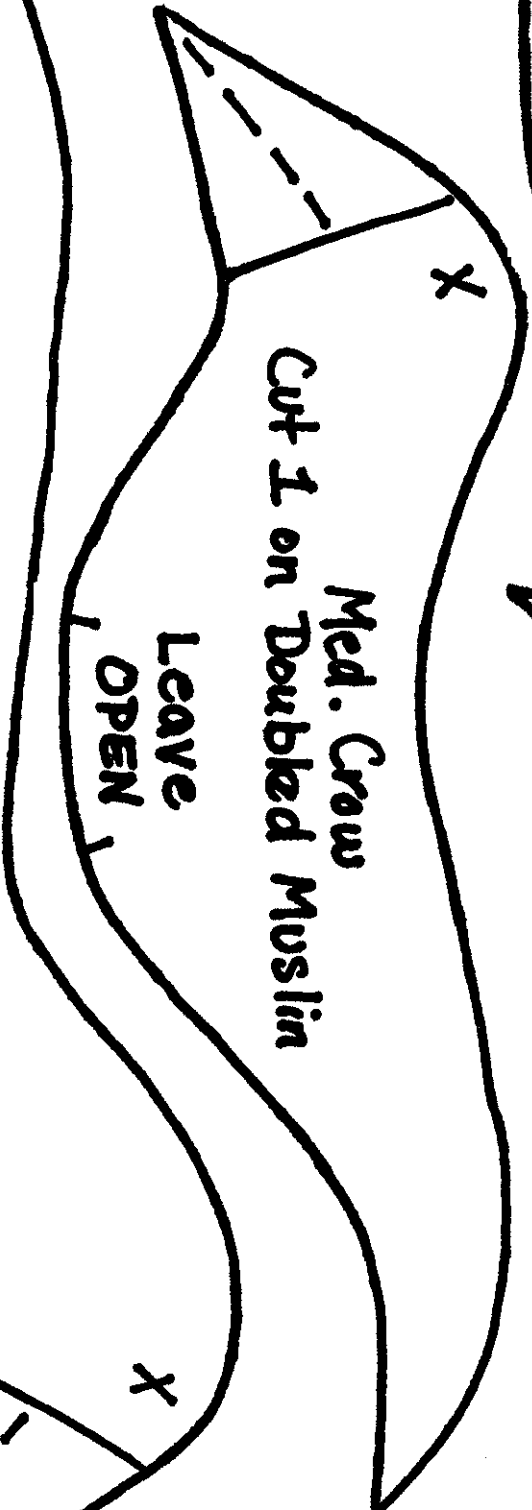
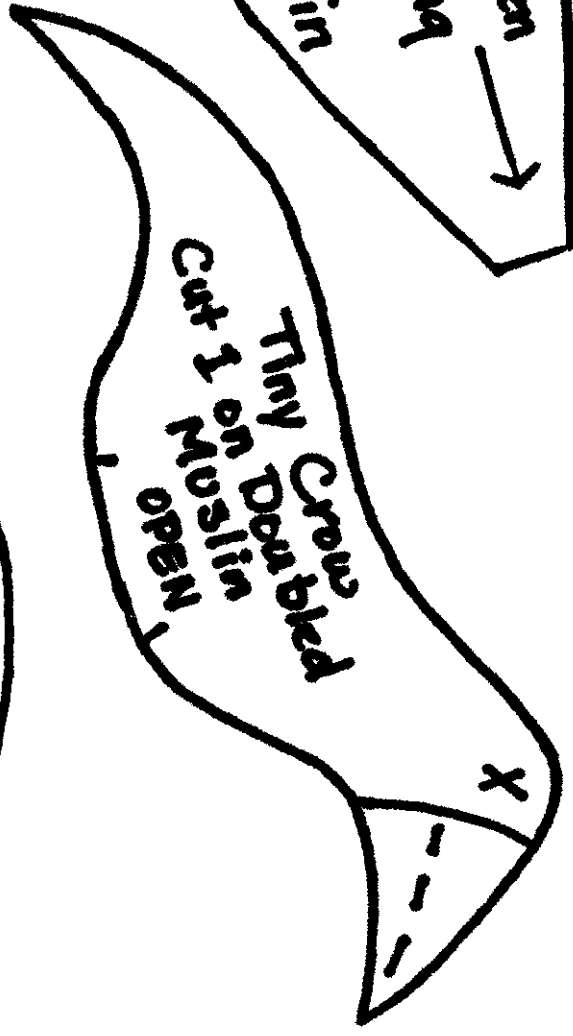
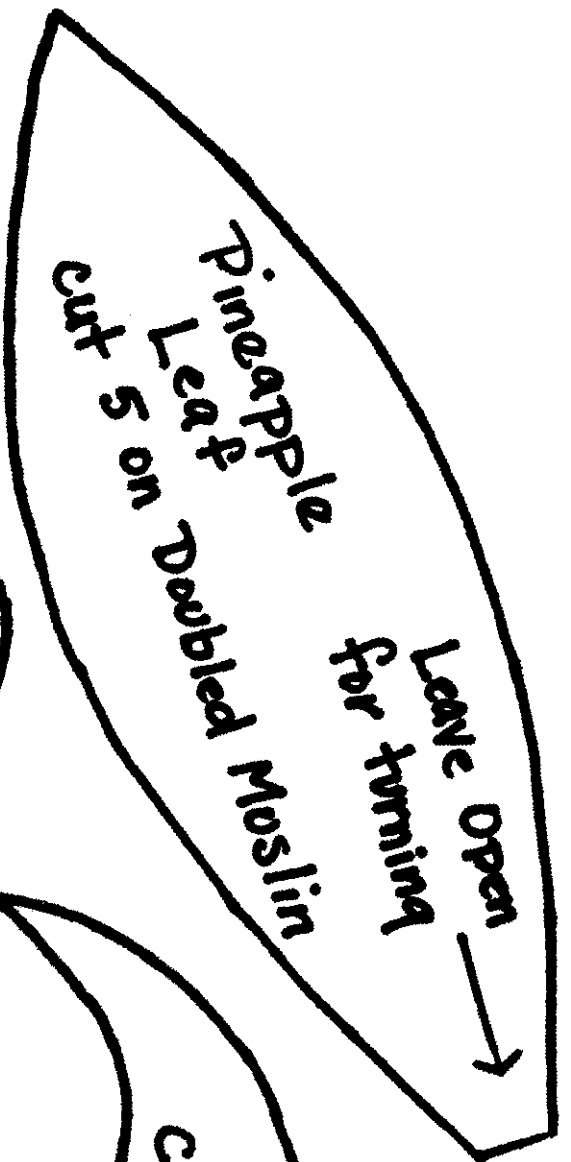
Now you will need to cut five sets of pineapple leaves. Place on doubled muslin. There is no seam allowance so tracing line is sewing line. Cut excess and turn right side out. Iron with a warm iron to flatten. Spray with coffee stain mixture and bake in the oven. When cool and dry cut five pieces of thin gauge wire approx. 7" long and insert into center of leaves. Trim excess wire flush to leaves. Paint all five leaves front and back with dark forest green acrylic paint. Water the paint down just a bit so that it goes on smoothly. While leaves are still wet, take your candy bar brown paint and dry brush some strokes randomly on leaves for shading. Around the edges and down the center gives the leaves a nice look. Let dry. Sand each leaf lightly then rub them with cinnamon.

### Makin' the Crows

Place each of the three crow patterns on doubled muslin. Trace around each crow with your disappearing marker. The tracing line is the sewing line. Sew around each crow on that line and leave open where indicated for turning and stuffing. Trim excess and turn. Lightly stuff each beak and machine stitch where indicated. Trim threads and stuff the rest of the crow. Hand stitch opening closed. Paint all three crows black using thinned paint. Let dry. Paint each beak in antique gold. Let dry. Sand each crow lightly with fine sand paper. Sand some areas more than others til you achieve the look you want. After sanding spray each crow with coffee stain mix and bake in the oven on a cookie sheet at 180 degrees til dry. Rub them with cinnamon and cross stitch on the eyes with black DMC floss.

### \*Puttin' it Together

Now to assemble your prim! Take a 14" stick and insert into your pineapple about 8". Use white school glue to secure in the center of the stuffing. Gather the top of the pineapple opening and push down til you meet the top of the stuffing. Mark this point on the stick. We want the leaves to be secured below this point. Position all 5 leaves around the stick and secure tightly with wire. (You may need an extra pair of hands for this part) Regather the top of the pineapple opening and scrunch it down til it meets the top of the stuffing and encircles the leaves where they are attached to the stick. Use a long length of jute and wrap around the gathered pineapple to cover the raw edge and hide the leaves where they connect to the stick. Keep wrapping the jute around til the whole "stem" is covered. Tie off loose ends and secure with a little glue. Cut the stick to the length you would like to start "stacking" your crows. Make a small cut on the underside of the largest crow and fill with white glue. Position your crow on the stick by inserting the stick in the hole and let dry before proceeding. After the first crow is dry either stitch or glue (using a glue gun) the rest of the crows in alternating directions, stacking one crow on top of the other. (Refer to cover photo) Give them a little bed of moss between each bird. Tie on your grubby tag and you are done! Enjoy your prim.... It looks great!!!



© 2005  
Susan Dean  
Threadbare Primitives

Tracing line  
is sewing line on  
all these pieces

↑ Leave Open ↓

Pineapple  
Cut 1 on doubled  
Quilted Muslin

Sew with 1/4"  
seams

Bring together for  
Box Seams  
(both sides)

