

## #11 - Curly ~ 14"

Designed By Elaine Dowlan

### Needful Things:

- 1/2 yd muslin (I used predyed)
- 1/4 yd fabric for dress
- 1/4 yd fabric for "loons"
- Yarn for hair
- Embroidery floss, linen thread or crochet thread  
(for face and gathering at waist and sleeve)
- Strong thread of choice (attaching arms, legs)
- Fabric paint markers (facial features)
- Craft paint (legs, blush and facial features)
- Fiberfill
- Poly pellets (optional)
- Disappearing marker
- Basic sewing and painting supplies
- Flavored tea bags and vanilla (optional)

## My 3 Angels Raggedy Boutique

Email: [edowlan21@netzero.net](mailto:edowlan21@netzero.net)  
[www.my3angelsraggedyboutique.com](http://www.my3angelsraggedyboutique.com)



©2008. MY3ANGELS. All rights reserved.  
Photocopying or other method of reproduction is Prohibited.  
Finished dolls can be sold on website, ebay, or at craft shows.  
Please give designer credit when sold on internet.



## My 3 Angels Raggedy Boutique



#11 - Curly ~ 14"  
Designed By Elaine Dowlan

## "CURLY" - 14"

(Please read instructions before making doll. Trace pattern pieces onto posterboard, then cut out. Traced lines will be your sewing lines unless otherwise indicated, i.e. clothing. RST = right sides together; RSO = right sides out.)

**STAINING:** Staining (or not staining) can be done at your preference. I like to buy a pre-dyed muslin, then brush a light, scented stain on doll after she is stuffed and arms and legs are attached. I fill a measuring cup (about 3/4 full) with water and add 1-2 teabags, and 1 or 2 scented (I like cinnamon-apple-spice) teabags and 1 tsp vanilla. Boil, and let steep to desired strength. Then brush on mixture with 1" craft brush. Dry using a hair dryer or clothes dryer (I use hair dryer to remove excess drips first). I lay my doll on a towel when brushing and wrap her in that towel when I put her in the dryer. You may prefer to stain your own muslin before sewing, or after she is put together.

**CURLY'S BODY:** IF WEIGHTING DOLL'S BOTTOM, trace around body, 2 arms, and 2 legs on double layer of muslin with disappearing marker. Sew on traced lines, leaving open where indicated. Box bottom as indicated. Trim about 1/4" from seam; clip corners as needed. Carefully cut through one layer of body where indicated on pattern and turn RSO. Turn arms and legs RSO. Fill bottom of body with 1/4-1/2 cup poly pellets, depending on how much weight is desired. Then finish stuffing firmly with fiberfill. Sew opening closed with strong thread (i.e., button thread, embroidery thread or floss). Stuff arms and legs to stuffing line, and whipstitch ends closed after folding under 1/4" (you may prefer another method). Sew arms and legs to body where marked using your choice of strong thread. IF NOT WEIGHTING BOTTOM, trace around body, arms and legs on double layer of muslin. Sew on traced lines, leaving bottom of body OPEN. Turn RSO. Stuff legs, whipstitch closed, then attach by hand or machine (preferred) to bottom of front side of body (toes can point either way). Stuff body firmly, then stitch closed at bottom (turn under about 1/2"). Then you can sew arms to body with strong thread (if you want her a little child friendly, arms can be machine sewn to body using a small zigzag stitch). She is now ready for more staining or putting on her face.

**FACE AND FEET:** You have your own options here. I blush my cheeks first with barn red paint, using the dry brush method. The facial features were painted here and you may choose to hand stitch some of the features with embroidery floss or linen thread. I dry brushed a few stripes on her "**curly**" feet with barn red paint, instead of shoes and socks. You may want to add a few more stripes up the leg.

**HAIR:** (SEE DIAGRAMS FOR SECURING HAIR) I used a yellow washable wool yarn (from Wal-Mart) for hair. Cut enough pieces of yarn approximately 6-1/2" in length and attached them across the hairline so that "Curly" would have short bangs in front and long hair in the back. You can attach the pieces by whatever method you prefer. I stitched each piece through the hairline. You may want to lay your strands in place and secure in place with embroidery floss. If you use this method, you may want to use Large Doll Spun or Raw Spun Wool. I untwisted my strands of yarn for a straggly, "Curly" look.

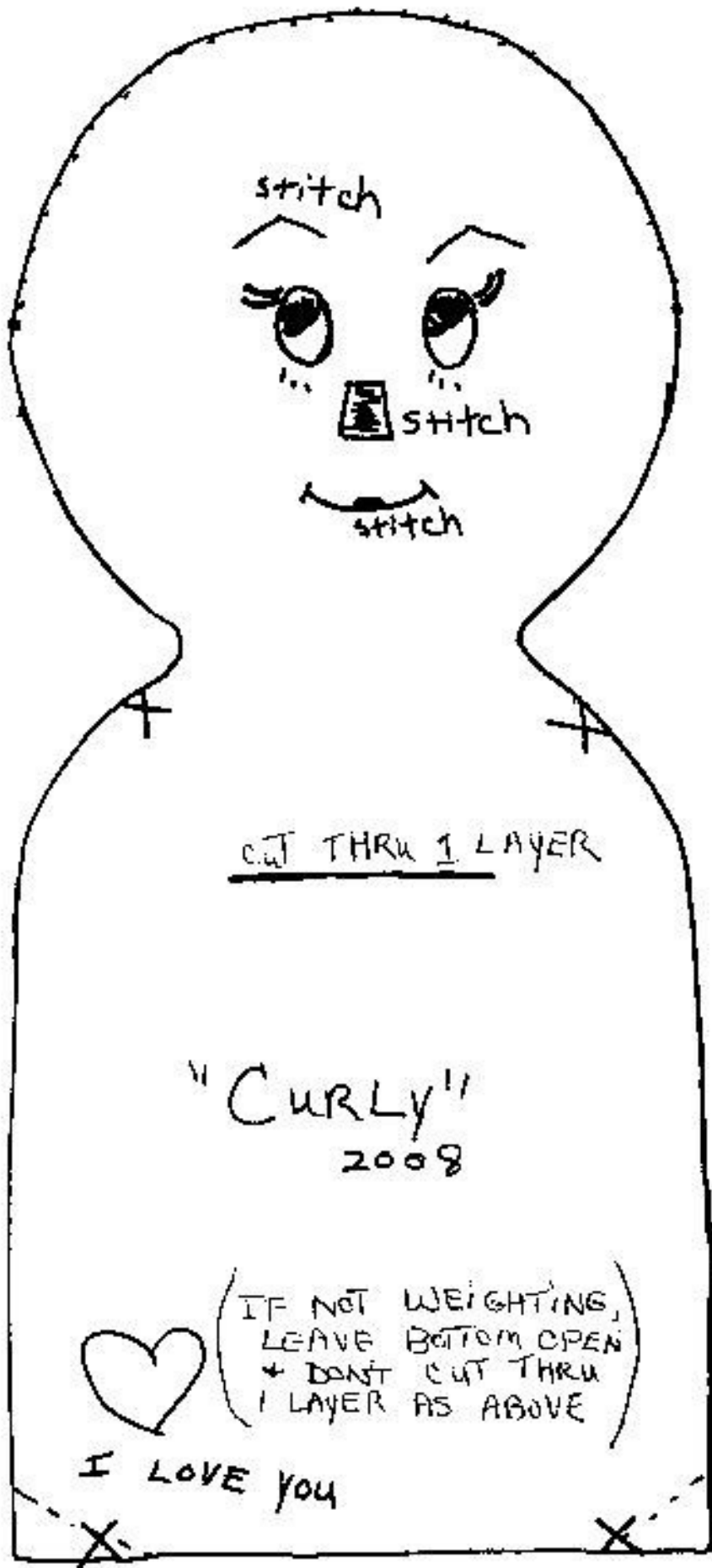
**LET'S GET CURLY DRESSED:** (SEE DIAGRAMS.) Trace dress bodice on doubled fabric with disappearing marker and cut out on the traced lines. Save some scrap fabric for hairbows. Place RST then sew around sleeve to waistline and neck as shown on pattern. For skirt, sew 2 pieces of fabric together (1/4" seam). Run a gathering stitch at top of skirt, and gather up to fit waist of bodice, then stitch bodice to skirt at waist. If preferred, you can sew the skirt pieces and bodice pieces together first, then sew from the sleeve end to the skirt bottom. Turn neck edges in and form a drawstring around neck with embroidery floss (color of choice). Turn sleeve edge under about 1/2" and make drawstring as you did on neck. You can also leave sleeve end as it is, and place drawstring 1/2-1" from edge for a different look. Put dress on doll and draw up at neck and sleeves (at desired length) and tie. Sew "loons" per directions and do a drawstring at waist as on dress. **YOU MAY PREFER TO DO HAIR BEFORE DRESSING. WHATEVER WORKS BEST FOR YOU IS FINE - I SOMETIMES DO MY FACE LAST (AFTER I SEE THE DOLL'S PERSONALITY).** Make bow(s) of strips of leftover or other coordinating fabric and attach to head.

**FINISHING TOUCHES:** Remember to sign **CURLY** make her a name tag. This doll can be made for a responsible child by using my alternate method of sewing body; clothing can be made child friendly by cutting a little opening in the back of bodice and adding a snap, and using elastic for sleeve, and waist of loons, instead of running stitch (e-mail me if you need directions for this method). **USE YOUR IMAGINATION FOR EMBELLISHMENTS. ADD YOUR OWN SPECIAL TOUCHES. I ONLY ASK THE YOU DO NOT ALTER THE PATTERN.** If you have any questions please email me at: **edowden21@netzero.net**

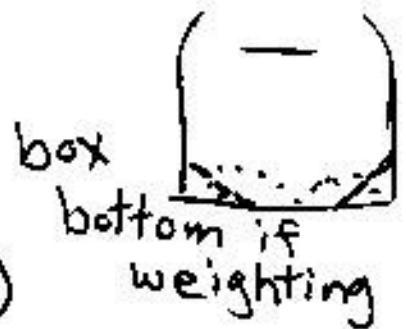
**HAVE FUN WITH CURLY!!!!**

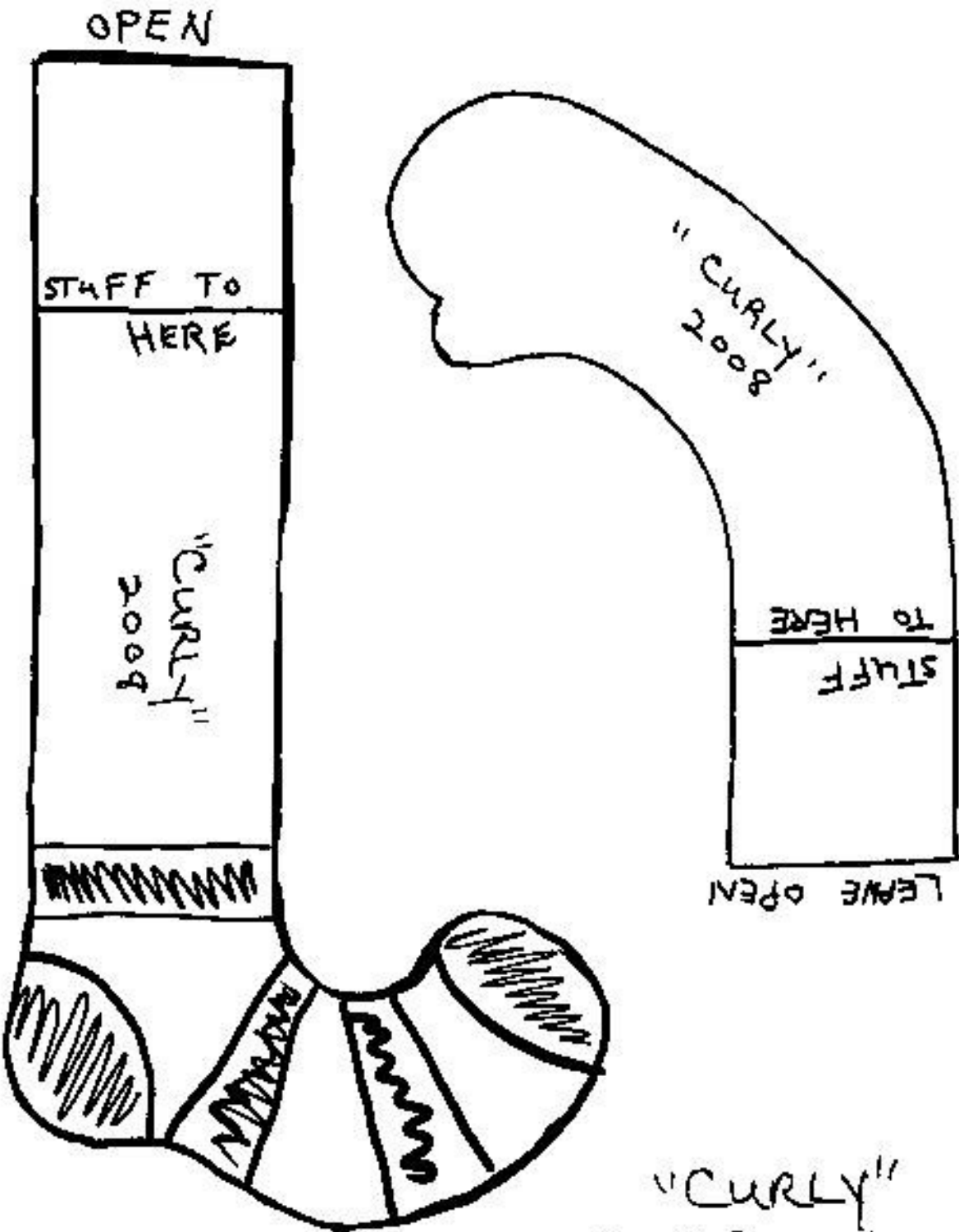
Thank you for your pattern and many blessings! Please visit my website at:  
**<http://www.my3angelsraggedyboutique.com>.** Finished dolls can be made for your own website, craft shows, booths, etc. When selling on the internet please remember to give credit to the designer, **E. Dowden**

**2008 My3Angels Pattern and design © 2008. My3Angels. ALL RIGHTS RESERVED.** Mass producing, photocopying and all other forms of reproduction strictly prohibited. Pattern may **not** be photocopied for sale or for sharing. Please do **not** put the paper pattern or copies for sale on any auction site without my express permission.



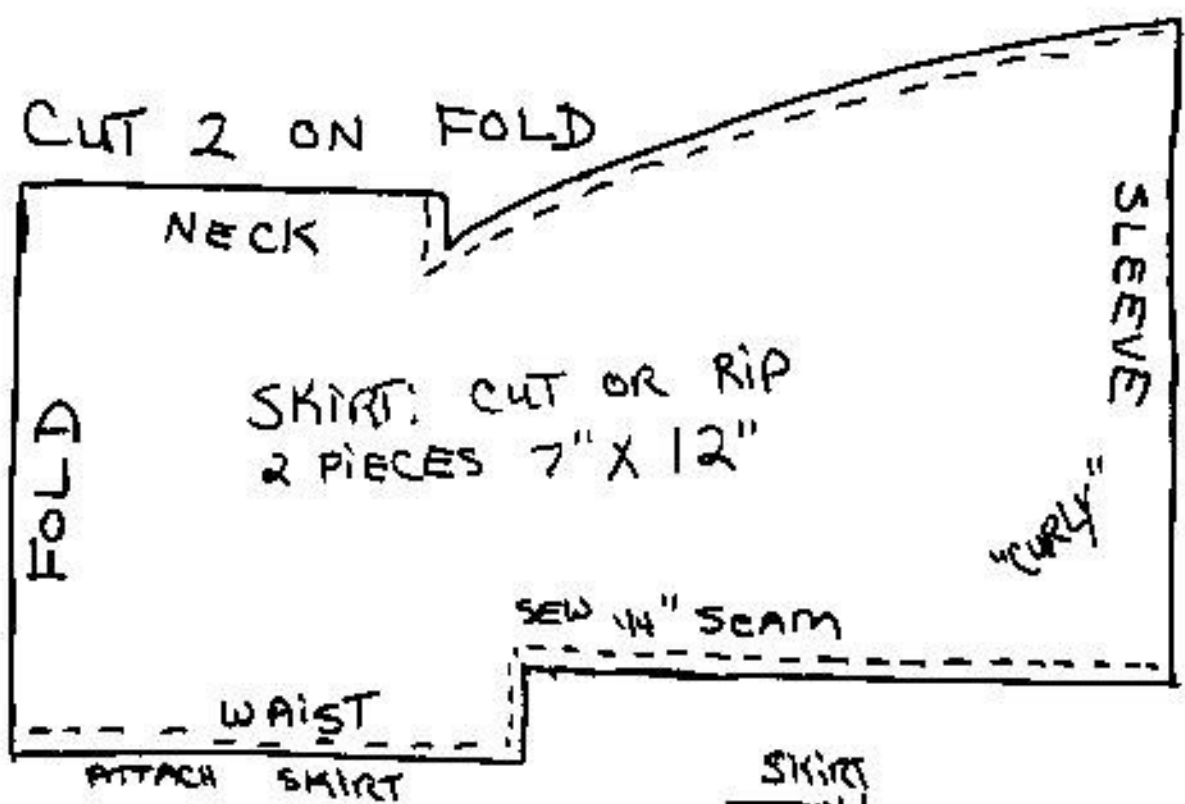
my 3 Angels  
2008



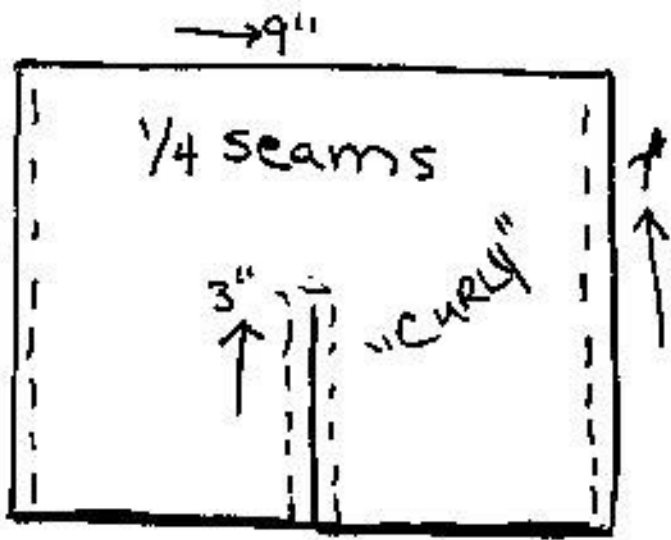


"CURLY"  
My 3 Angels  
2008

2



"CURLY"  
MY3ANGELS  
2008



SEW SIDE SEAMS;  
FOLD in 1/2; CUT SLIT  
3" FROM BOTTOM;  
OPEN + SEW 1/4"  
SEAM AROUND  
CUT!

3