

Things You'll Be Needin'

- 1/4 Yard of Muslin
- Disappearing Marker
- Fiberfil Stuffing
- Acrylic Paint - (Black, Candy Bar Brown, Burnt Sienna)
- Medium Sandpaper
- Coffee Mix
- Black DMC Floss and Long Doll Needle
- 2 - 1/2" Black Buttons for Doll Eyes
- 1 - Misc. Button
- 1/4 Yard Homespun for Skirt
- 1/8 Yard Homespun for Blouse
- 1/8 Yard Homespun for Loons
- Scrap of Green Homespun for Stem

Threadbare Primitives

P.O. Box 1588
Anahuac, Texas 77514
409-267-6679
www.threadbareprimitives.com
tbpsales@gmail.com

© 2006 Susan Dean Threadbare Primitives
All Rights Reserved

Please feel free to make this pattern for fun or profit. You may sell the finished product on ebay, your website or any other auction site, as long as you give me credit as the designer. Mass producing or photocopying of this pattern is strictly prohibited.

Threadbare Primitives

Primitive Doll and Folk Art Patterns



#241 Little Pumpkin Prim Folk

****BEFORE YOU BEGIN****

- * Read all instructions thoroughly and assemble all the materials you will need before beginning.
- * 1/4" seam allowance is not included on most pattern pieces. Tracing line is sewing line unless otherwise indicated. Refer to pattern.
- * You may coffee stain your fabric before beginning your project or after. (or both!)

****TECHNIQUES FOR PRIMIN' IT****

Coffee Stain Mix

- * Mix approx. 1/4 cup instant coffee with 1/2 cup water plus a pinch of vanilla extract. You may even add a hint of cinnamon to the mixture. For a lighter stain effect use instant tea. You may apply this with a sponge brush or squirt bottle.

Bakin' Your Prims

- * Some people like to bake their projects in the oven to "age" them a bit. If you choose to do this after coffee staining PLEASE WATCH IT CLOSELY! Slow dry your project in a warm 180 degree oven with the door left ajar just slightly. Turn your prim every so often to prevent scorching and allow it to dry evenly.

Sanding

- * The key to the prim look is careful sanding of your project. I use fine sandpaper. Medium is ok, just be careful, you don't want to sand straight through the fabric. Sand lightly all over. A little more in areas that would naturally show more age. Afterwards, you may rub lightly with cinnamon to "grubby" it up even more. Makes it smell good too!

Makin' a Prim Tag

- * Spray or brush coffee mix on tags, bake in oven at 180 degrees until dry. After they cool add your favorite prim saying.

***Gettin' Started**

Trace on to doubled muslin, one doll body, 2 legs, and 2 arms. Sew with right sides together, on tracing line and leave open where indicated on pattern. Trim excess and turn right side out. Stuff all pieces firmly. Stuff arms and legs to the line indicated on pattern. Put legs, toes pointing out, into open body bottom. Pin in place then sew bottom closed with legs in the seam. Hand stitch arms to body. Refer to pattern for placement of arms and legs.

***Primmin' Her Up**

Paint (using a foam brush) your doll with thinned down Burnt Sienna. Let dry. When dry, sand well with med. sandpaper, more in some areas and less in others to show uneven wear. Spray with your coffee solution. Now bake in a 180 degree oven on a cookie sheet til dry. (Refer to instructions). Watch carefully and turn often to prevent scorching. Remove from oven and let cool. Lightly blush her cheeks with Candy Bar Brown and stripe her legs with Black. Use a dry brush technique. Cut one nose piece out of homespun (I use the same homespun I make her blouse out of). Center nose piece on her face and stitch on using 2 threads of black DMC floss and a long doll needle. Enter and exit through her chest (this will be covered later with her dress). Stitch on two 1/2" black button eyes. Position them above nose piece, one slightly above the other. Refer to picture and pattern for placement of all items. Next, using 1 strand of black DMC floss and a long doll needle, stitch on her brows and lashes. Enter and exit through her chest or back. Now, trace one stem piece onto a doubled scrap of green homespun. With right sides together, sew on traced line, leaving open at the bottom for turning and stuffing. Trim excess, turn, and stuff firmly. Now turn the bottom edge under just slightly and stitch the stem to the top of her head.

***Makin' Her "Loons"**

Cut or rip 2 pieces of homespun 6" x 3 1/2". Sew with 1/4" seam down both 3 1/2" sides. Now find the middle of the loons and draw a line up the middle about 1 1/2". Sew around that line, up one side and down the other. Now cut right up the middle on the drawn line. Turn right side out.

***Makin' The Dress**

Cut out one dress bodice as indicated on pattern. Rip or cut 2 pieces of homespun 2 1/2" x 12". Gather the 12" length with a running stitch along the top edge til it matches the bottom piece of the bodice. I use embroidery floss for this. Pin right sides together. Sew each to front and back of bottom of the bodice. Sew underarms all the way down the skirt. Turn right side out.

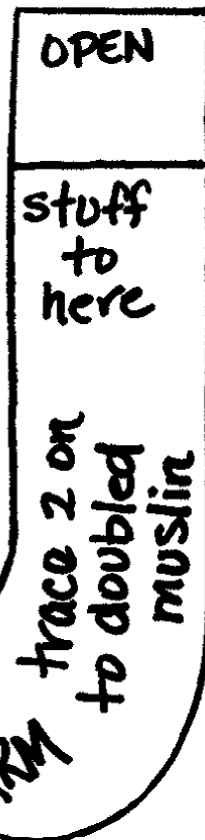
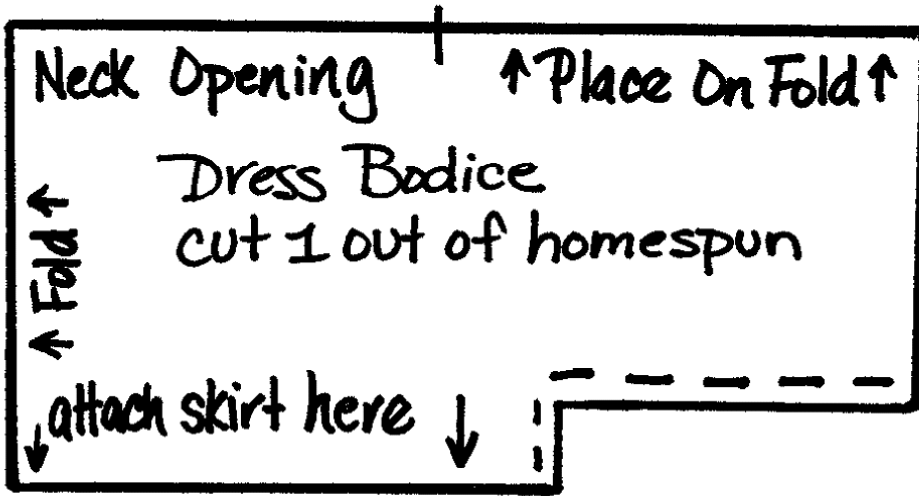
***Dyin' The Clothes**

Soak all clothes in your coffee stain solution over night. The next morning, wring them out and put them in the oven on a cookie sheet to dry at 180. Watch carefully so they don't burn. Turn often. Do not attempt to get the wrinkles out when laying them on the cookie sheet. That will make them look old when they come out.

***Puttin' Her Together**

Put the loons on the doll and tack in place at the waist. Cut doll neck as indicated on pattern. Put the dress on the doll. Stitch around neck line with black embroidery floss. Begin and end at back of neck, pull up tight and tie off. Stitch a little button at her neckline. Add a pretty bow to her little stem on top of her head. Check your pattern for proper placement.

Wow! You did it and she looks great! You have a new member of your Fall family!



©2006 Susan Dean
Threadbare Primitives

