

A SOUTHERN PRIM DESIGN



Materials:
a saucer (for painting)

Muslin
Thread
2 Rusty Nails
Embroidery hoop
Black wool
Black Floss
White Floss
Poly fill
White paint
Brown paint
Black paint
Green paint
Barn red paint (for lips)
Small paintbrush

Coffee stain

4TBS Instant Coffee 1 small pot
1 cup Hot water Med size paint brush
1 TBS Vanilla. 1 whisk
Cinnamon powder

Take the water, coffee and the vanilla and put into the small pot, and bring to a boil. I do this and whisk mixing the cinnamon. It should be kind of thick and goopy. I like lots of cinnamon. When its hot and boiling it's time to turn it off. (I use one pot for this because I can leave it out for daily use until it's gone,) and begin to paint it on your doll, and clothes. The clothes you can save to last and put in last, wring out, and then, into the oven to dry, or hang outside in the sunshine. Either methods works, it just takes longer to dry when you hang them outside. Now around the holidays are great like Halloween you can use pumpkin spice, and cloves. Christmas has scents like apples, pumpkin and so on.

Another method I have used for lighter touches is flavored teabags. Raspberry, and Lavender and mix it with orange flavoring from your spice department.

INSTRUCTIONS

First double your muslin and place pattern pieces down and pin all around the edges to hold in place. I would go ahead and cut all pieces, so you're ready for the next step.

FEATURES

First thing is taking the strip for the top of the head and sew both sides just the top of its head together. So now draw his eyes, and make a line down the face so you can center his nose. Put in the embroidery hoop to tighten the material and floss the eyes with white floss (separate into 3 strains) and then do the black (separate 3 strains). Now place the pieces face down against the other piece match them up evenly. (I usually flip the other piece too sometimes cutting them if you flip one piece the will not match up perfectly unless you flip both pieces. Sew almost closed. Leave enough room to flip right side out, and to stuff. I usually leave the bottom or the side.

Frankenstein: Normally you would flip right side out but not in this case. If you look close enough I kept it wrong side out. You can just stuff him and finish sewing him close. Next you will want to pinch the nose area and start with on one side an bring the needle through go back on the same side, back to the other side so your not sewing across the material. Pull slightly so it'll gather the poly fill. It gives you the nose look or Pinched look. Keep doing this to the nose is long enough and knot. Wider towards the bottom of the nose. Also I pinched on his face to give him a scar, and I made the stitches outside to make it hideous. LOL. HINT: you can sew in his hair now if you can't felt it in, so the material is still soft. OR wait until after you paint him and felt it in. I have sewn it in by hand. At both corners and one piece in the middle. I Hand sew the eyelids on before coffee staining. Once Frankie is out of the oven then it's time to paint him.

PAINTING

(Saucer, a little brown, black, green. A little drop or two of water dip your paintbrush in the water and do some brown first mix a little green and paint the entire body. . I take a small paintbrush an dip in the black paint fade it out then dip it in water then I go over the creases of his nose, his scar, and over the edges of his eyelids. I also take the barn red now and paint his mouth, then after you oven dry sand it down to give it the faded look.

JACKET

His jacket. Match it up to the front of him and then the corner of suit that goes against his neck fold over and sew at the top to hold the now collar down. Sew along the top shoulder following it around the outline of his body. (Like a seam of a jacket.) the down, underneath sewing that piece onto the front of him. Then repeat the process on the other side. Coffee stain the jacket, bake. If to you... he's not prim enough run some more stain over his entire body. It doesn't hurt to make him darker. (if so, you might have to paint over him again.) After you take him out the oven I take black paint and a little water and color wash the jacket to make it look blackish. Bake again. I sand him lightly. Now if he's not green enough add some more to your liking then bake to dry.

BAT

First you will want to draw his eyes and a small line where you pinch the nose and fangs. Floss with black for its eyes, and white for his fangs. Pinch a small piece since he's so little just to give him the indention of a nose. Then floss his fangs. Once that is done flip him face down towards the ground for example and flip the other piece to for even match up, and sew almost close so you can flip him right side out, and stuff. Sew his ears on now. Then sew him close by hand. One this is done you can coffee stain, back until dry.

PAINTING

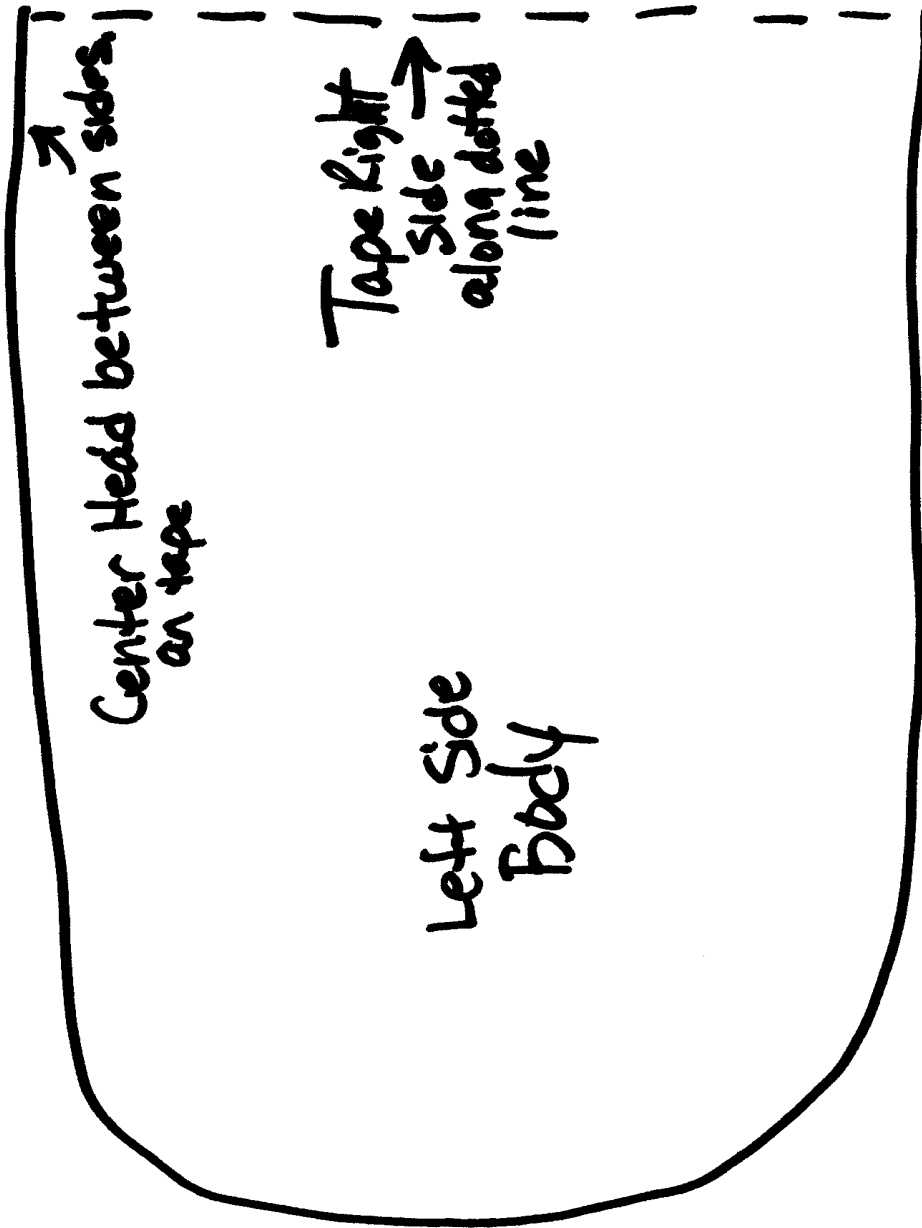
I use the brown first as not to make him pitch black. Once the brown is on, then I start adding the black on him, and water it down with water. Not much but it makes the paint easier to absorb in the fabric. Bake, then go and paint his eyes black, and his fang white. Bake, then sand lightly. I did add just a touch of white to his ears.

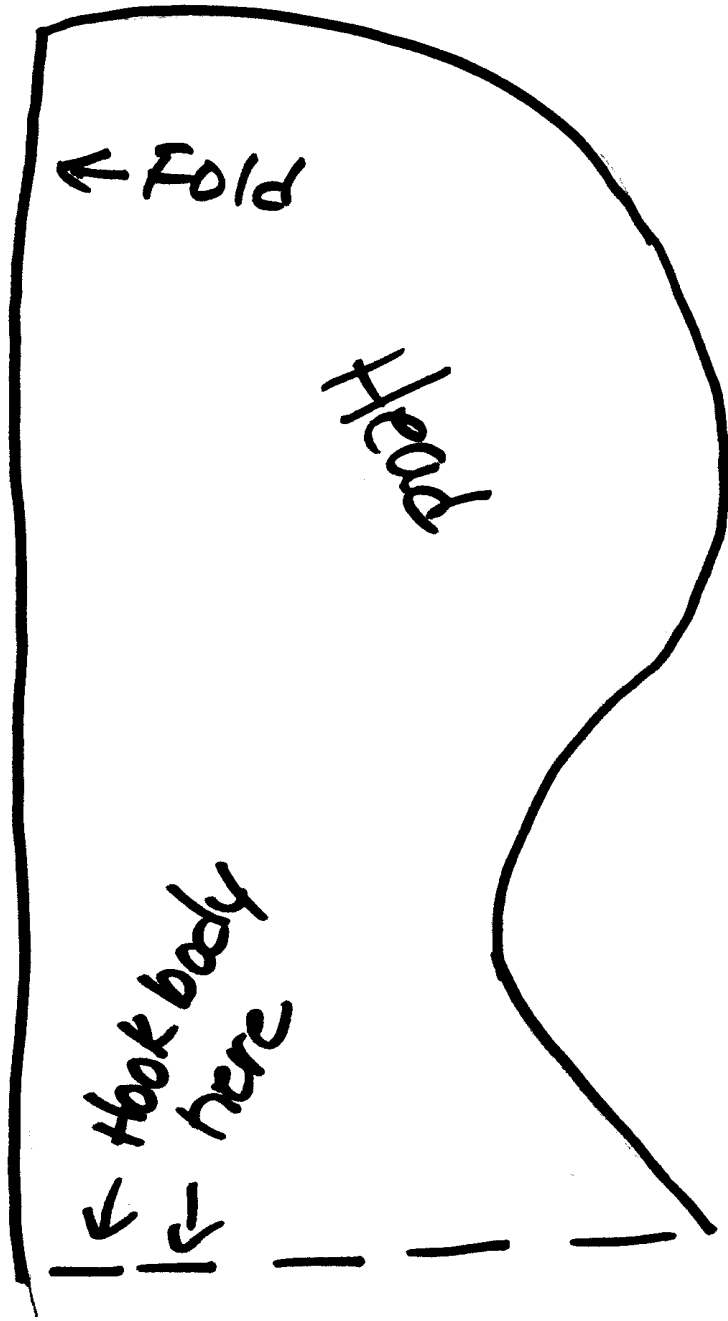
Center Head between Body.

Right side
Body

Tape Here to
Left side







Sew along top

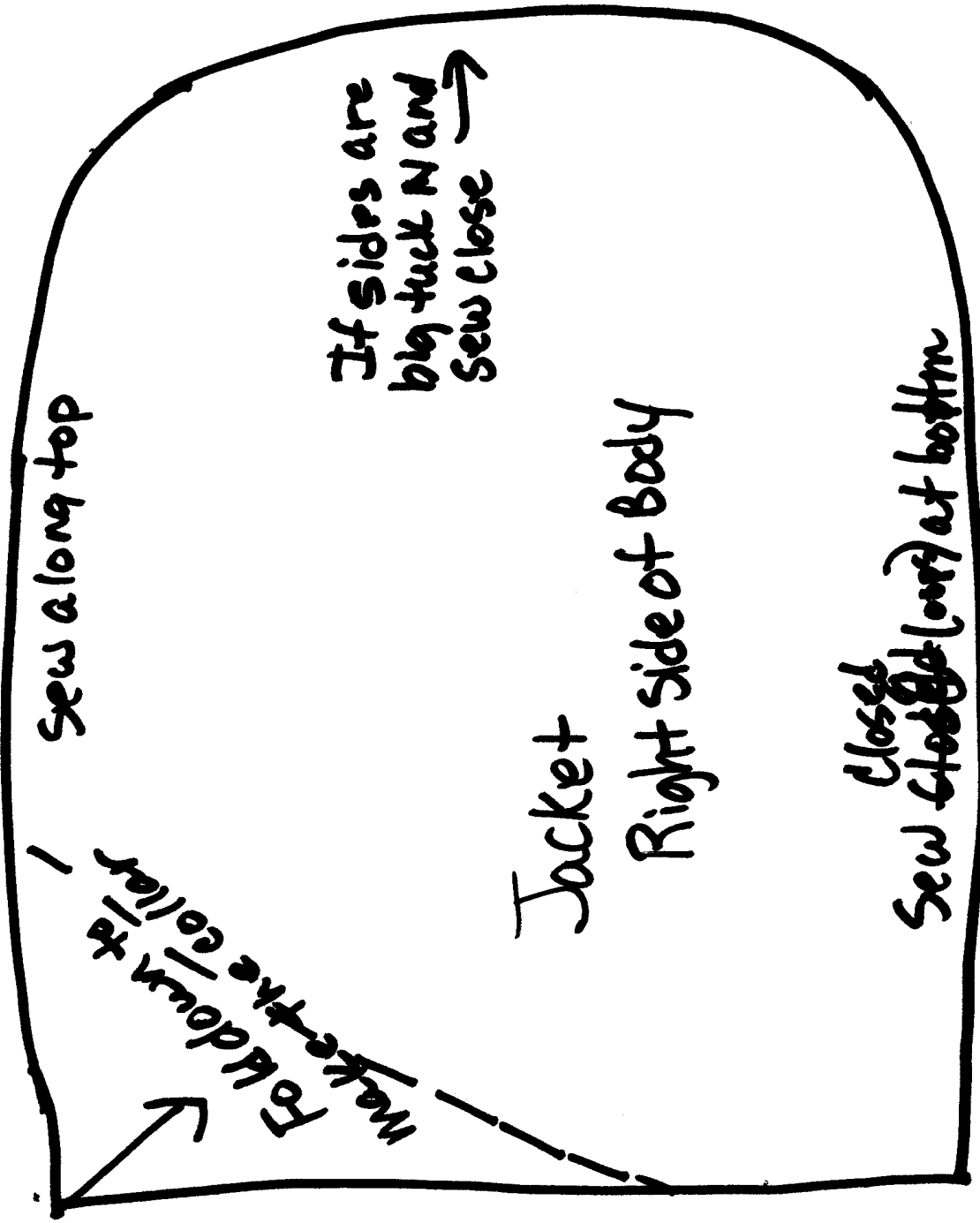
If sides are
big tuck in and
sew close →

Jacket

Right side of body

Close
Sew closed (over) at bottom

Fold down
Make the collar



Sew close along top

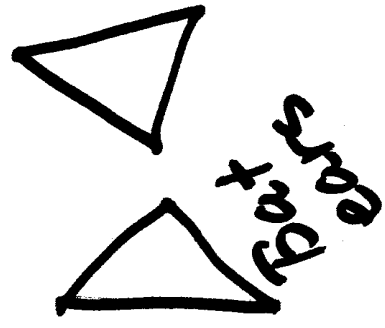
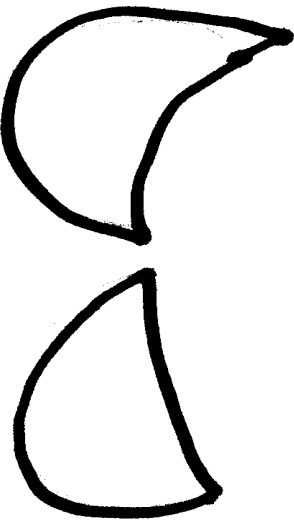
Fold down to
make collar

← If sides are too
big tack
big close.

Left side of Sucker

Sew close at bottom

EYE LIDS



EARS

MOUTH

