

## *Tuxedo Cat Doll Blender Cover Pattern*

Thank you for purchasing my Tuxedo Cat Doll pattern. Sewing using this pattern will enable you to make a beautiful collectible doll that will last for years to come. I hope you have fun so lets get started sewing and you will have a doll to hold those kitchen bags - so cute.

Before sewing read the entire pattern getting familiar with what you will need and how to get organized. Next lay out your pattern pieces. Cut out your pattern. After cutting out lay out your patterns pieces on the muslin. You will need to trace around using a fabric marker, permanent marker or pencil your choice. Now you're ready to cut - WAIT...DON'T CUT ON THE LINE. CUT OUTSIDE THE LINE A LITTLE MORE THAN 1/2 INCH. leaving enough room in-between the pattern pieces. You will sew on the line. ( I like to use a very small stitch easier to follow around the curves when you do) We will stuff paint sand & stain each body piece after we are finished sewing and stuffing.

### BODY:

Sew the body make sure you reinforce at the neck seam...Sew all the way around. Make a slit through I SIDE of fabric (see pattern piece) now turn inside out. Add about a cup of poly pellets or cat litter at the bottom of body before stuffing to weight her. Stuff making sure you use small amounts of stuffing at a time. This takes a while but well worth it. Stuff firmly. making sure the neck is nice and firm....

**NOTE:** Trace your pattern on card stock and use it for pattern pieces makes it easy to use over again. Or You can trace on freezer paper and you can use it many times...makes things easy...using this method you can lightly iron your patterns pieces to the muslin to trace and they wont move while tracing...this method is also used in paper piece quilting...

### Arms

Trace the arms. Cut around the outside of the tracing lines not on the line...Remember to set your stitch length to very small maybe around 1-2 makes it easy to get around corners. Sew, turn and stuff. Stuff firmly half way up the arms - the other half make it loose so you have movability. Stitch closed. Set aside for painting and staining process comes later.

### Sculpting the head:

Using a long doll sculpting needle...using black or cream crochet thread...go in through the top of the head...coming out to top of eye brow...take a small stitch down right next to the one your needle is at...then take another stitch going across the other side...so it is a back and forth and across method...making sure to pick up some of the stuffing from under neath...this is why it is pinch sculpted...you will need to pinch and move around for the sculpting to come out great...practice...practice...dont get discouraged you can do this...see the pattern for directions.

### Making the clothes:

Lay out and cut pattern pieces follow directions on pattern pieces.

### Painting and Staining:

Mix together in a plastic container...the ziploc plastic containers work real well and you can cover the bowl and save your paint a few days until the next doll. You can also freeze the paint for a week or two for use in the future...but dont wait any longer than a week or so...Mix together 3 parts Black to 1 part Burnt Umber mix with 1 or 2 parts water to thin the paint down... If it look to brown add more black... GET SOME RUBBER GLOVES TO USE...SAVE THE MANICURE :)

Using a sponge brush or whatever scrubby brush you have paint all the pieces...let them dry or you can bake in a low temp over approx. 200 degrees until done. Use an old cookie sheet for this - you aren't going to use cookie sheet again for food - mark it crafts only...after the cat face is dry...paint the section of the head a creamy white...you can add a few drops of burnt umber to tint the white if you like. paint the center section...let dry...now we will sand.

Remember you can use walnut hulls for staining...or food color...or coffee...tea...many things...use your imagination...also paint using acrylics or even oils...but oils take along time to dry...  
I appreciate you choosing my pattern, I hope you will enjoy making this doll over and over again.

You have any questions please don't hesitate to email me...  
I really hope you enjoyed my pattern for making your Primitive Folk Art Doll...A lot of time goes into making them...but well worth it I think and you can hand them down from generation to generation...If arms to different positions if you like.

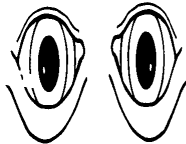
Take the two hands and tack them together with your embroidery floss...and tuck her a little mouse or whatever you wish her to hold inside her arms. Or you can pin her hands to her body using the very large quilting pins...this will do the same thing as sewing good thing about this is you can move her to sit on any surface...

Here's my tip on box pleating your corners of the doll body bottom. After sewing the body...take the bottom corners...now match the seams together in the very corner so it looks like a triangle...with point at top...sew across the that corner...when you turn it this will give the body a nice flat area to sit on top of the slender cover...also makes her nice

Sew a loop of crochet thread at the back of the doll to allow to hang her up.

later...next do the same around each sleeve.  
(you can leave it raw edged or you can under turn and run gather leaving long tails of thread to gather Now that her dress is dry. Dress your doll and using your crochet thread...hand gather around the neck oven...stand by and watch you don't want them to burn...

Steam her clothes...After mixing your coffee and vanilla mixture...dip your clothes into a large container...and then squeeze out and dry...you can hang them out or dry in the warm oven, if drying in steam the clothes...  
way down to the bottom of the dress skirt area...do this on this other side too...turn right side out ... and and back...now match right sides together and stitch the sides from the edge of the sleeve area all the bottom part of the dress...attach this to the bottom part of the dress top...now do this on both parts...front Sewing the dress and dress top (bodice): After cutting out all pieces of clothes...gather the top edge of the



same way as the middle of the face area.  
Face Painting: Use a pencil or marker to draw on her face. Using camel or sandstone either works, paint the complete eye, use dark green or dark mustard yellow color for the cats eye, giving her a dark black center section for the pupil...and don't forget a tiny white dot to highlight the eye...Paint the brows the

again...Using the black embroidery thread and your long doll sculpting needle attach your arms.  
STAIN: Brush over your dried painted and sanded doll with your coffee/vanilla mixture and place back in the oven again on cookie sheet for about 10 mins or until dry. Ready to make her dress. Let sew

Sanding your doll parts: Now that your finished painting and the pieces have dried...use your sanding tools to lightly sand...On the face sand a little bit more on the eye brow, mouth and nose areas...

I love buying sanding blocks from your local paint store...they are washable and will sand a large area...remember to lightly sand some of the features on the face, enjoy...sewing is so enjoyable...and I am always here to answer any questions you may have...just email me...I love helping others to develop their talents...I taught sewing for many years until finally following my heart and opening my own business with my sewing and painting. I also teach folk art painting classes .. From time to time I do offer some painted works...Drop me a line I love to meet each one of you...Rhonda

### Tuxedo Cat Doll Blender Cover Pattern RR-22

**NOTE:** Please remember this doll and accessories have small parts and are not intended for small children.

**ALL RIGHTS RESERVED Copyright 2005 RAGGEDYRHONDAS Designs**

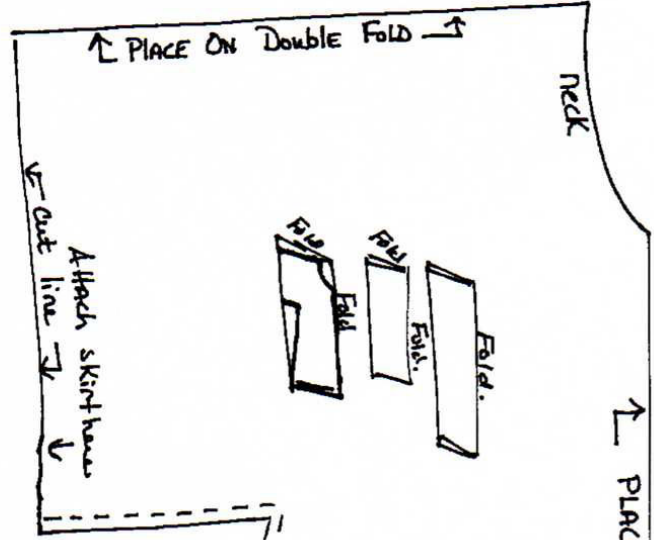
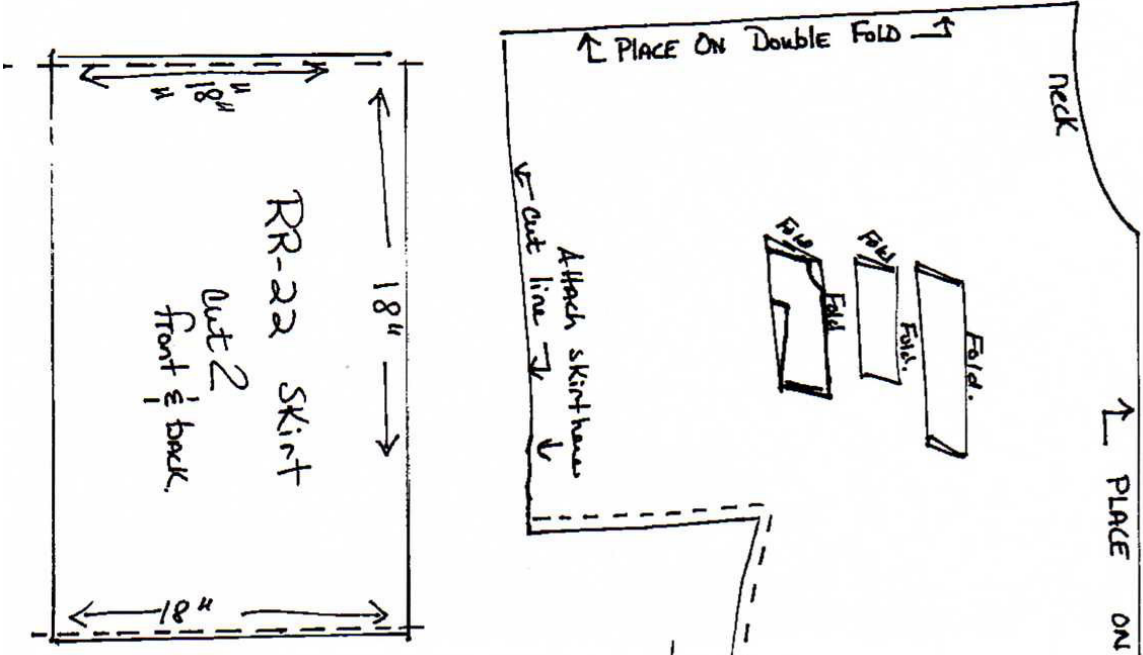
This pattern packet cannot be reproduced or copied for any reason. Mass produce or copy this without permission due to copyright law. Using this purchased pattern to create and sell finished items is permitted. No Mass Production of any kind is allowed. If you are selling your finished item on Ebay or any other form of internet/store listings, Website, Store Front, Please give credit to the design ~ RAGGEDYRHONDAS

**Questions: [jammragedytrhonda@yahoo.com](mailto:jammragedytrhonda@yahoo.com)**

Note: if you want less wrinkles in your fabric add a teaspoon of fabric softener to your stain mix. It helps...  
Thanks so much ~ Rhonda

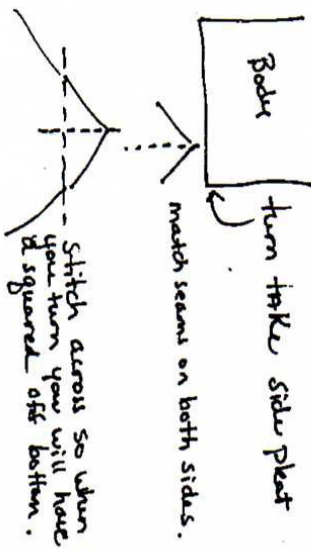
**EBAY - RAGGEDYRHONDAS**

Tuxedo Cat Doll Pattern Blender Cover RR-22

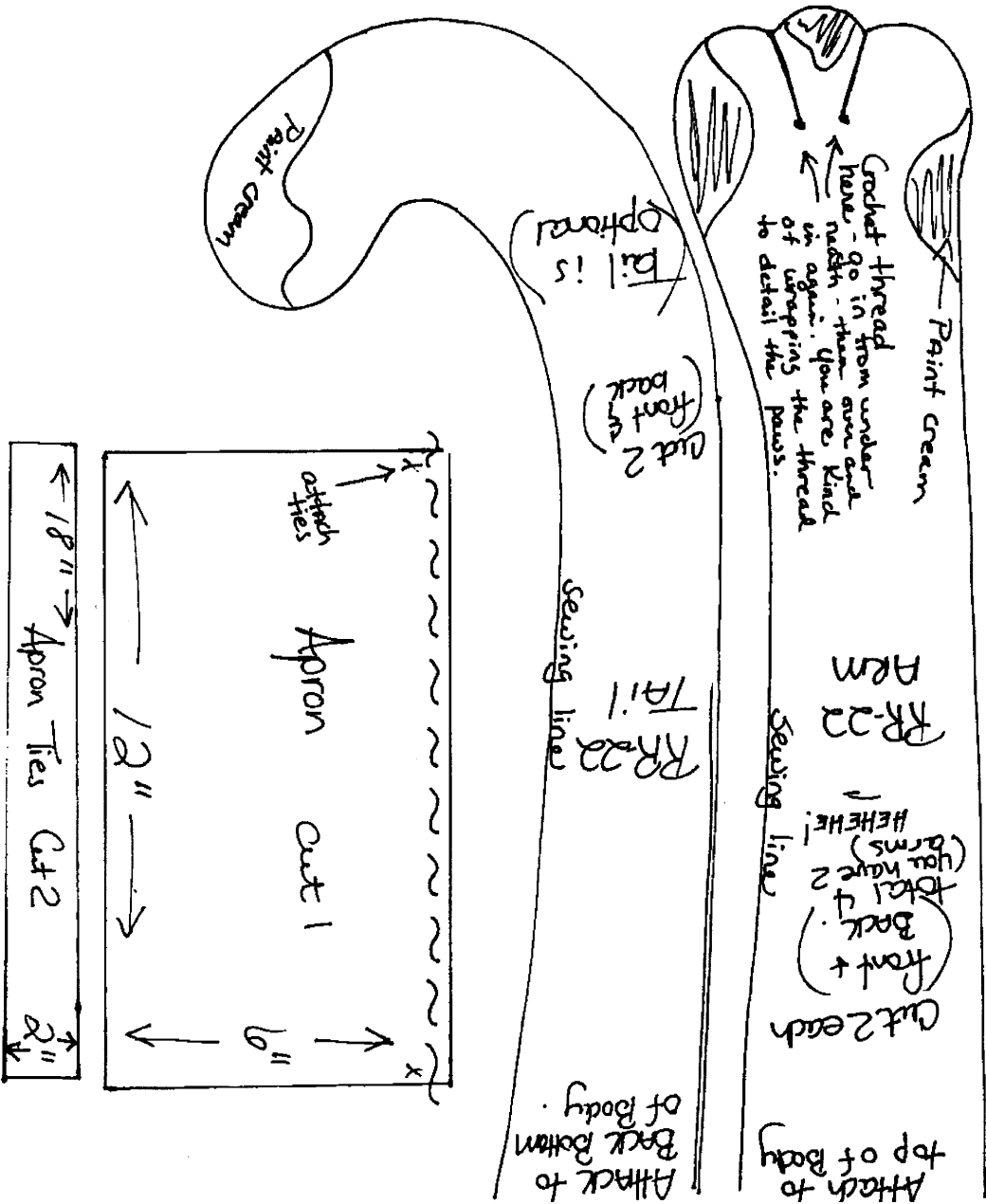


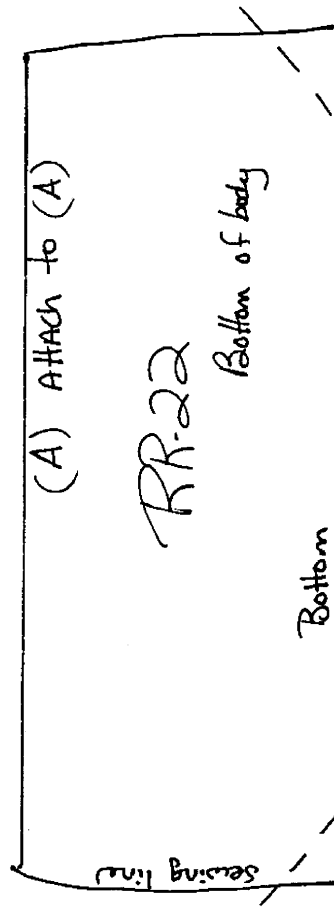
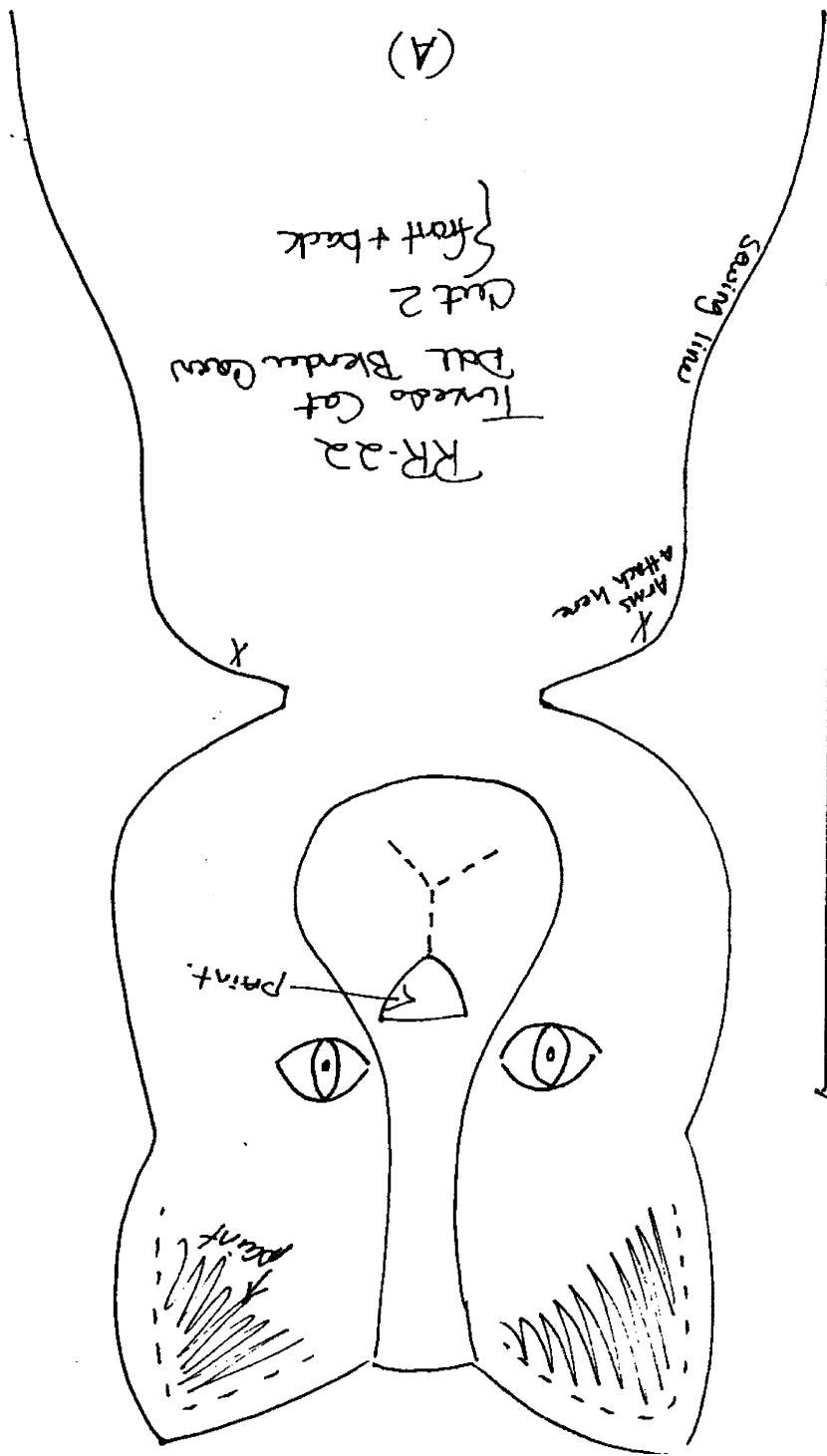
to stitch note: go into top of head w/ croch-  
 thread come out at top of nose. take stitch small.  
 come out + then  
 down - under -  
 across - up - take  
 stitch - down - across -  
 up - take - stitch - down  
 across - up - take  
 stitch down - across -  
 etc. ....

To Box Pleat Body Bottom



gather to  
 wrist here to  
 arm





## TUXEDO CAT DOLL BLENDER COVER PATTERN

26 INCH HANG UP DOLL

### Materials:

Body - 1 yard muslin  
Dress Bodice - 1/2 yard fabric your choice  
Dress Bottom - 3/4 yard fabric your choice  
Paints - Burnt Umber, Black, Ivory (cream), dark flesh, fabric  
pen for drawing and embellishments - thin tip- black.  
Brushes - detail brush for eyes, small round brush.  
Misc: Crochet Thread (BLACK AND CREAM), buttons, ribbon  
if you like.  
Stuffing fiberfill, Polypellets or cat litter unscented for  
weighting, Yarn thick in red or dark orange your choice of  
color.

© RAGGEDYRHONDAS  
2005 - RR-22

Payments to:  
Lynn Shurley  
109 Loxley Drive  
Warner Robins, Georgia 31088

EMAIL: [iamraggedyrhonda@yahoo.com](mailto:iamraggedyrhonda@yahoo.com)  
WEBSITE: EBAY  
RHONDASFOLKART

RaggedyRhondas can not be responsible for human errors, print errors or customer  
workmanship. All finished items are protected by copyright and may not be  
reproduced for commercial or publication purposes without the prior written  
permission from RaggedyRhondas. All rights reserved, including photocopy,  
reduction or enlargement.

## RHONDAS FOLK ART



Tuxedo Cat  
Blender Cover  
Pattern

