

Louie

&

Pete

MOUSE

12" Doll

Olde

Rustic

Prims

~Olde Rustic Prims~

“Louie and Pete”

Primitive Black Cat and Mouse Doll Pattern #28

*****PLEASE TAKE THE TIME TO READ THROUGH THIS ENTIRE SET OF DIRECTIONS BEFORE YOU BEGIN SEWING!**

I know it's not the fun part of sewing, but it is important!***

1. The pattern line is the sewing line on the body pattern pieces.
2. I trace around my paper pattern onto my material with a black pen. Some people use a Mark-B-Gone marker because the tracing lines will wipe away with clear water. I usually paint all of my dolls, so the black pen I use to trace around the pattern never even shows.
3. Some people make templates with their patterns by printing their pattern out on card stock, tracing the pattern onto manila file folders, using plastic, etc. I just trace right around my paper pattern, being very careful to hold the pattern down on the muslin tightly so it doesn't move. These are primitive dolls, so if you go off the paper pattern line a tiny smidge, who's gonna care??? That's what makes primitive dolls so wonderful because they're NOT perfect!!!
4. Always trim about 1/8" from your sewing line with pinking shears (these are the scissors that cut out in a zigzag shape). They might be a bit expensive, but they're so incredibly worth it! If you don't want to invest in a pair of pinking shears, then just trim around your sewing line with regular scissors (be careful not to cut through your stitching or you'll be sewing a new piece!) and then go back and clip right up to your stitching around all the curved parts and inside corners. This clipping part is absolutely necessary or your sewing will be puckered and not lay flat when you turn it right side out (RSO). Using pinking shears avoids having to go back and clip all those curves, which really is an incredible time saver!
5. I think that's it for now. Let's move on to the fun stuff!

MAKING THE BODY

A. Tracing the Pattern

Cut out all the pattern pieces. Trace one doll body, two arms, two legs, and the mouse's body onto a double layer of muslin. Trace the ears on a single layer of muslin and set aside. Stitch on the traced lines and leave open where indicated on the pattern (you'll need a place to turn the fabric and then stuff it!). Make sure to back stitch 1/4" to 1/2" at the beginning and ending of EVERY stitching line-----this is a sign of a quality, well-made doll! Trim around each piece about 1/8" from the stitching line with your pinking shears.

B. Turning, Stuffing, and Attaching Your Doll Parts

1. Turn your pieces RSO. I have a set of turning tools that I bought on eBay that makes this process EASY! They consist of two dowel rods (different widths), one thin metal rod, and three plastic tubes (different widths). They aren't very expensive, so if you're considering making a lot of dolls, you really need to get this set of tools. They'll make your life SOOOOO much easier-----believe me!!!!
2. Use one of your turning tool dowel rods or a chopstick to stuff your doll and cat parts with. Stuff only to the stuffing line indicated on the pattern pieces, but cram stuffing up to these lines until you can't possibly cram in another bit of stuffing! I'm a firm believer that a quality doll is stuffed as TIGHTLY as possible.
3. Hand-sew your arms and legs onto your doll body at the places indicated on the pattern using doubled crochet thread. (If you'd rather machine-sew them on, then do that!) While you're sewing the legs on, make sure to sew up the open area as well.
4. Take the ear piece and gather the center part with ecru crochet thread until the ears bunch up and look like real mouse's ears! Tack them onto the mouse's head (about $\frac{1}{2}$ " above where the eyes will be) so the folded parts are facing forward---like a cup shape.

C. Needle-Sculpting the Facial Features

1. With a black pen (or your Mark-B-Gone marker) draw a nose and a mouth right onto your cat's "face" area. Don't worry if your lines aren't perfect. Just use the pattern as a guide and draw the lines on freehand. Remember, you just can hardly mess up a primitive doll!!!!
2. Once you've drawn your face on, take a long needle and doubled crochet thread and poke it through the back of your doll's head all the way through to the front. Pull and poke and tug so the knot is hidden inside the back of the doll's head. (I don't like knots showing on my dolls!!!) Make your needle come out at the top of the nose. Take a tiny stitch next to where you came up and go UNDER the material gathering as much stuffing as possible. Come up on the other side of the nose. Poke your needle back on the line, go under the material again, and come up on the first nose line. Pull tightly as you come up so your material bunches up. Do this all the way down the nose. Then go under the fabric to do the mouth in the same way.

3. On your last stitch of the mouth, push your needle and thread through the back of your doll's head and make a good secure knot. Pull the thread one way and then the other to make the hole larger. Then stick your needle BACK INTO THE SAME NEEDLE HOLE and pull tightly. You'll be pulling the knot back into the doll's head so it doesn't show. Make your needle come out about an inch away and snip the thread. Ta dah!!!! No knots will show!

4. Needle sculpt the paws by taking doubled crochet thread and going up through the bottom of the paw. Hide your knot!!! Come up on the top of the paw in the spot shown on the pattern. Go around the toe area and come up through the same hole in the bottom of the paw and up into the same hole on the top of the paw. Then come up from the bottom of the paw to the next hole---do this two times--- and the last hole two times. Knot your thread and hide the knot. Snip the thread. Now sculpt the other paws.

D. Painting

1. First, put on a pair of rubber gloves to keep your hands from getting absolutely gross! Then mix $\frac{1}{2}$ part water with 1 part black acrylic paint and mix it in an old container. Make sure the container has a tight fitting lid. I usually mix $\frac{1}{2}$ cup of water to 1 cup of paint so I'll have a lot of paint to make several dolls. Use a 1" foam brush and brush the paint mixture all over your cat. I paint EVERYTHING, even the top of the legs and stomach even though they don't show once your doll is dressed. I believe in making a quality doll from the bottom up!

2. Place your doll on a plastic plate and throw it in the microwave (YES, THE MICROWAVE!!!) for a minute or two at a time until the paint is dry. You HAVE to watch it until you know how your microwave works! It's very easy to burn up dolls----believe me! I've had dolls with flames shooting from them SEVERAL times!!! If you don't have a microwave, or you're not comfortable using it for dolls, then throw the doll on an old cookie sheet and put it in a low oven (200 degrees) for about 20-30 minutes. You'll still have to watch it carefully because it WILL catch on fire! If you don't want to do either of these ways, then just set your doll out to dry overnight or in the sun for several hours. You will have to turn it over a couple of times so it dries evenly all over!

3. Mix $\frac{1}{2}$ part water with 1 part gray acrylic paint and mix it in an old container. You don't need much so don't mix too much! Use your foam brush and paint the mouse completely, including both sides of the ears. Dry the mouse.

4. Once the paint is dry on your cat and mouse, take a piece of sandpaper (I use a hand-held mouse sander---it's so much easier!) and carefully sand all over your dolls. Be careful because you can sand right through the fabric---but this can be a great primitive look, too!

E. Making the Eyes

1. Position your two mismatched buttons on the cat's face. (Refer to the pattern or the picture for placement.) Poke your needle with black doubled crochet thread through the back of the head to the front. Make sure to hide your knot! Sew the buttons on with two stitches each and then poke your needle out of the back of the head and tie a knot in the thread. Remember to hide your knot before you snip the thread!
2. With black crochet thread, make a small knot on each side of the mouse's face for eyes. Refer to the pattern for placement.

F. Coffee Staining

1. Once you have your eyes sewn on, you're ready to coffee stain your cat and mouse. Put those rubber gloves back on and mix 1 cup of instant coffee to 2 cups of hot water. (This will last you for several dolls.) You will need to store whatever you don't use in the refrigerator or it'll get moldy!) Dump in about 1/2-3/4 cup of imitation vanilla. Vanilla makes it smell so yummy, and good and warm!
2. Take another 1" foam brush and LIGHTLY brush the coffee stain all over the dolls. Throw them back in the microwave (or your oven or outside in the sun) until they dry.
3. When completely dry, rub your fingers roughly over both dolls and you'll see the unique color of your dolls come through! Make sure you rub in and around the needle-sculpted places really well. Sometimes I even sand the doll all over again to really give her an aged look!

FINISHING YOUR DOLLS

1. Take an 8" piece of heavy, rusty wire, string two small rusty jingle bells and one large rusty jingle bell onto it. Wrap it loosely around the cat's neck and twist it closed in the back.
2. Take 18" of thin rusty wire and cut it into 3" sections so you have 6 pieces. Poke a thick needle into the spots where you want the whiskers to go on the face and turn the needle a bit so a small hole is formed (refer to the pattern for placement). You will want to put a tiny bit of strong glue on the end of the wire whiskers and then poke them into the premade holes. Use a good, strong glue like E-6000.
3. Take an 18" piece of heavy, rusty wire and wrap the middle of it around your mouse. Wrap the ends of the wire around your cat's arms and then curl about 3-4" of each end by using a pencil or dowel rod and wrapping the wire around it.
4. Take a tiny bit of pink paint and touch a dot onto the mouse's nose. Rub a tiny bit on the inside of the mouse's ears, too.

One Last Thing

You need to get a thin permanent marker and sign and date your creation! I usually do it on the back of the head, but you can do this wherever you like!

One More Last Thing...

If you sell your finished doll on eBay, on your own website, at craft shows, on the internet, etc., PLEASE do the honorable thing and give Olde Rustic Prims credit for the design of this doll. You're welcome and encouraged to put your own adaptations on the doll, but credit for the pattern should go to me. I hope you thoroughly enjoyed making this item and make several more, but it may not be mass-produced in any way. No part of this pattern may be copied or reproduced in any manner. Reselling of this pattern online (including eBay) is prohibited. Every effort has been made to ensure that there are no errors. I cannot be responsible for human error or individual workmanship. And with that final word.....

~~~Thank you for purchasing this pattern!!!~~~

## Olde Rustic Prims

Celeste Flanagan

[www.rusticmoonprimitives.com](http://www.rusticmoonprimitives.com)

eBay id: olderusticprims

[olderusticprims@yahoo.com](mailto:olderusticprims@yahoo.com)

### Supplies

$\frac{1}{2}$  yard muslin material (for cat and mouse)

18" piece of thin, rusty wire

18" piece and 8" piece of thick, heavy rusty wire

Black, gray, and pink acrylic paint

Cinnamon

Imitation vanilla

Polyester fiberfill for stuffing

Crochet thread (black and ecru)

Two 1" foam brushes

Instant coffee (just the cheap stuff!)

Mismatched buttons (2)

Rusty jingle bells (2 small, 1 large)

E-6000 glue (optional)

Pinking shears (optional)

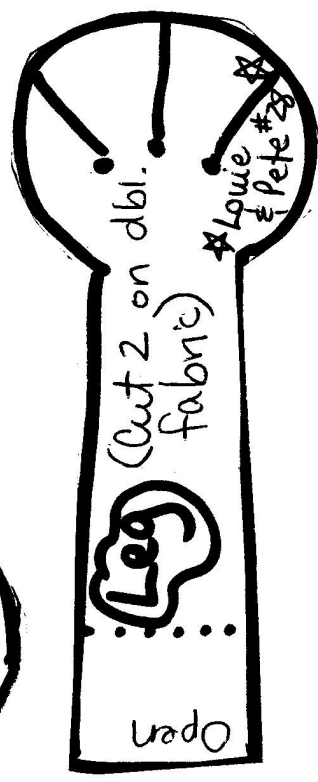
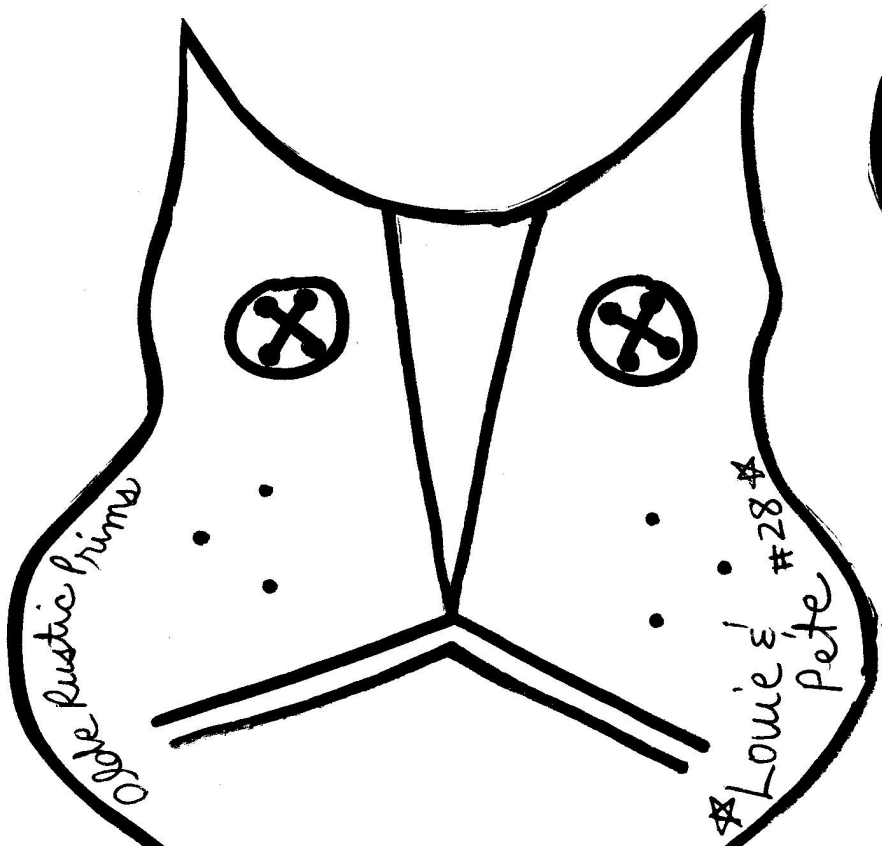
Turning tools (optional)

Mark-B-Gone marker (optional)

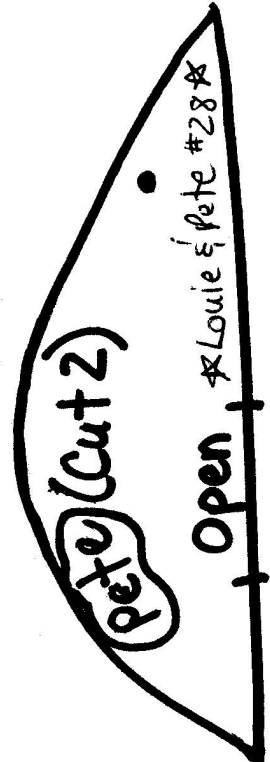
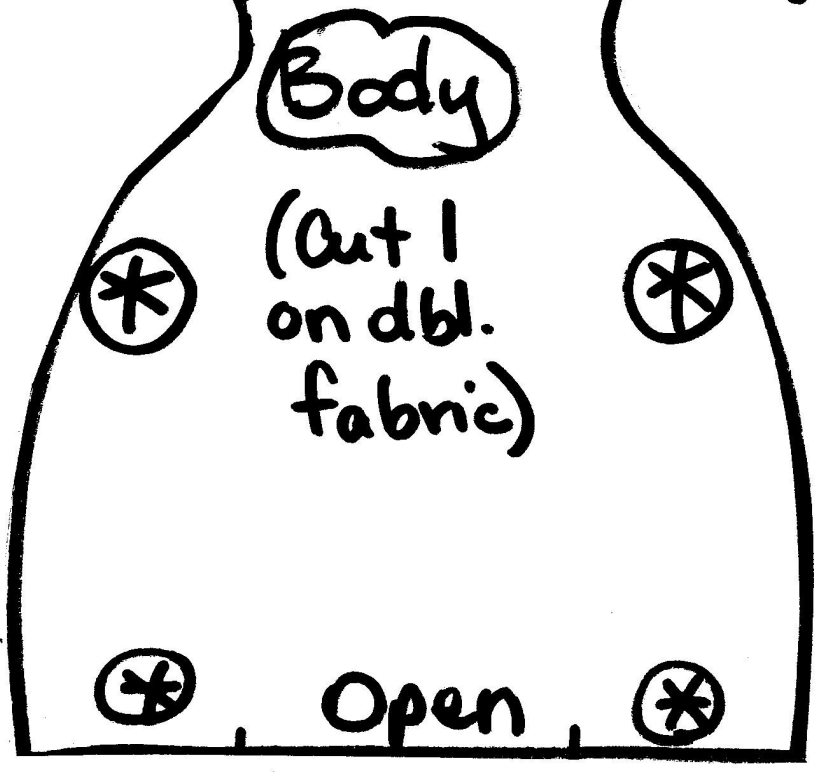
Playtex rubber gloves (optional)

Sandpaper

Long sewing needle



∴ = whisker placement



Louie's  
Pete #28

\* attach arms & legs here